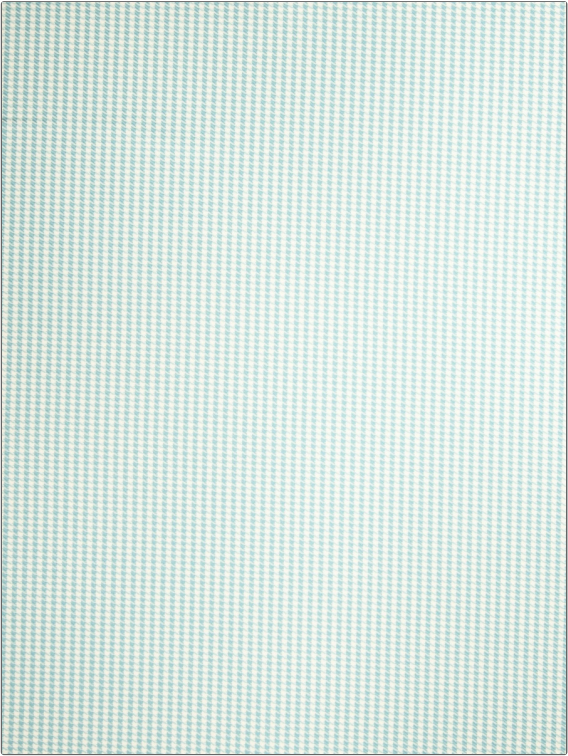


Fabric Product Details

PATTERN	Harborway
COLOR	Porcelain

BRAND	APPLICATION
Stroheim	Fabric
USES	CATEGORIES
Upholstery	Outdoor, Wovens
COLORS	DESIGN TYPES
Aqua / Teal	Houndstooth
SCALE	RAILROADED
Small	Not Railroaded



WIDTH	FINISH	VERTICAL REPEAT	HORIZONTAL REPEAT
54.00 in (137.16 cm)	Water & Stain Repellant	0.20 in (0.51 cm)	0.50 in (1.27 cm)
CONTENT	BACKING	FIRE CODES	DOUBLE RUBS
100% Solution Dye Acrylic		UFAC Class I, Passes NFPA 260	Exceeds 15,000 Double Rubs (Wyzenbeek Method)
PRODUCT NUMBER	COUNTRY	CLEANING CODES	
0684902	USA	WW	

ADDITIONAL PRODUCT NOTES
Water & Stain Repellant, Oeko Tex Standard 100, Mildew Resistant, Indoor / Outdoor, 1,500 Hours Light Fastness, 5 Year Warranty, Exclusive Pattern