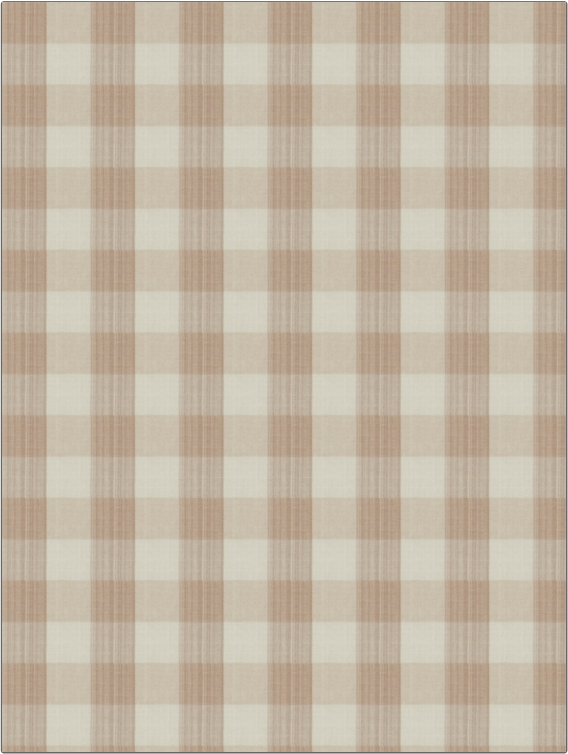


Fabric Product Details

PATTERN	Astrid
COLOR	Rosewater

BRAND	APPLICATION
Stroheim	Fabric
USES	CATEGORIES
Bedding, Drapery, Multipurpose, Upholstery	Wovens
COLORS	DESIGN TYPES
Pink	Check / Plaid
SCALE	RAILROADED
Small	Not Railroaded



WIDTH	VERTICAL REPEAT	HORIZONTAL REPEAT	CONTENT
54.00 in (137.16 cm)	3.70 in (9.40 cm)	3.70 in (9.40 cm)	100% Cotton
BACKING	FIRE CODES	DOUBLE RUBS	PRODUCT NUMBER
	UFAC Class I, Passes NFPA 260	Exceeds 24,000 Double Rubs (Wyzenbeek Method)	6972105
COUNTRY	CLEANING CODES		
India	S		

ADDITIONAL PRODUCT NOTES
Exclusive Pattern, Handloomed Fabrics Are Not, Guaranteed For Precise Color, Matching. Cutting From, Current Stock Is Advised., All Quoted Repeats Are, Approximate.