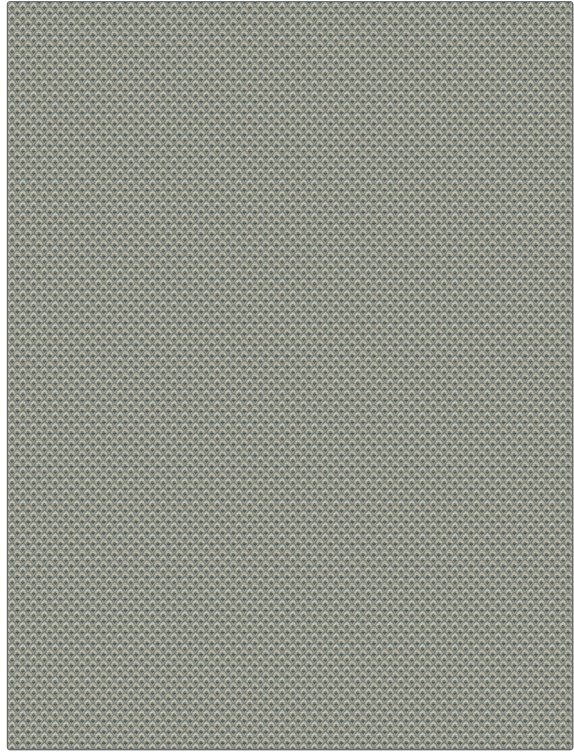


# Fabric Product Details

**PATTERN** Brandy  
**COLOR** Blue Topaz

<b>BRAND</b>	<b>APPLICATION</b>
Stroheim	Fabric
<b>USES</b>	<b>CATEGORIES</b>
Bedding, Upholstery	Wovens, Chenille
<b>COLORS</b>	<b>DESIGN TYPES</b>
Blue, Light Blue	Small Scale Woven, Bargello
<b>SCALE</b>	<b>RAILROADED</b>
Small	Not Railroaded



<b>WIDTH</b>	<b>VERTICAL REPEAT</b>	<b>HORIZONTAL REPEAT</b>	<b>CONTENT</b>
51.00 in (129.54 cm)	0.00 in (0.00 cm)	0.40 in (1.02 cm)	71% Rayon, 29% Cotton
<b>BACKING</b>	<b>FIRE CODES</b>	<b>DOUBLE RUBS</b>	<b>PRODUCT NUMBER</b>
100% Acrylic Backing	UFAC Class I, Passes NFPA 260	Exceeds 45,000 Double Rubs (Wyzenbeek Method)	6974301
<b>COUNTRY</b>	<b>CLEANING CODES</b>		
USA	S		

**ADDITIONAL PRODUCT NOTES**

100% Acrylic Backing, Exclusive Pattern