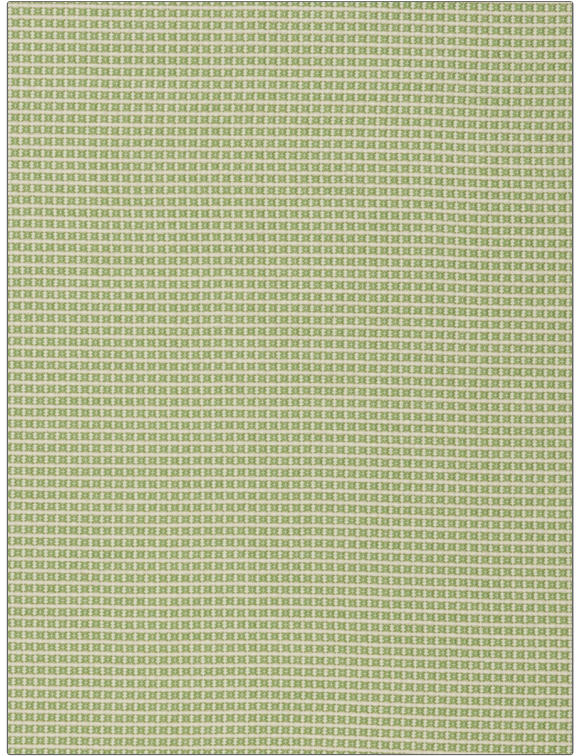


Fabric Product Details

PATTERN Wingo
COLOR Spring Green

BRAND	APPLICATION
Stroheim	Fabric
USES	CATEGORIES
Bedding, Upholstery	Wovens
COLORS	DESIGN TYPES
Green	Small Scale Woven
SCALE	RAILROADED
Small	Not Railroaded



WIDTH	VERTICAL REPEAT	HORIZONTAL REPEAT	CONTENT
50.00 in (127.00 cm)	0.37 in (0.94 cm)	0.25 in (0.64 cm)	82% Cotton, 18% Polyester
BACKING	FIRE CODES	DOUBLE RUBS	PRODUCT NUMBER
	UFAC Class I / NFPA 260	Exceeds 36,000 Double Rubs (Wyzenbeek Method)	7520207
COUNTRY	CLEANING CODES		
USA	S		

ADDITIONAL PRODUCT NOTES

Ca Tb 117-2013, Exclusive Pattern