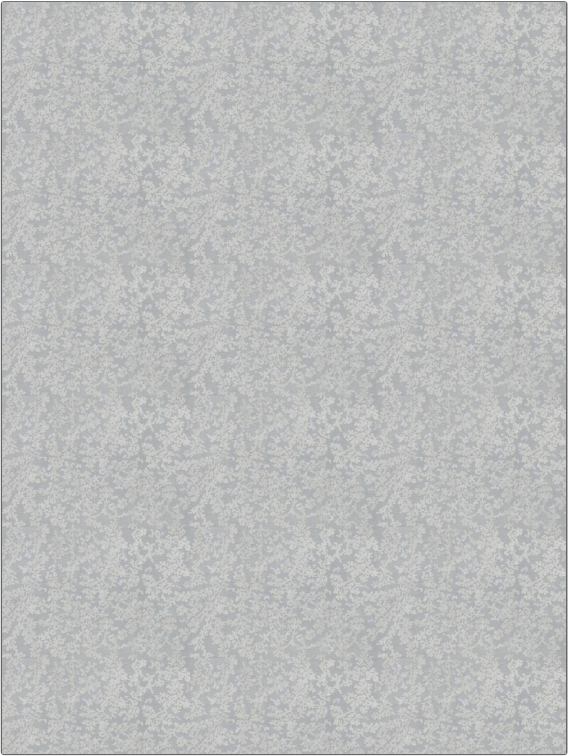


Fabric Product Details

PATTERN	Jota
COLOR	01

BRAND	APPLICATION
Stroheim	Fabric
USES	CATEGORIES
Drapery	Sheer, Linen
COLORS	DESIGN TYPES
Grey	Abstract
SCALE	RAILROADED
Medium	Not Railroaded



WIDTH	VERTICAL REPEAT	HORIZONTAL REPEAT	CONTENT
52.00 in (132.08 cm)	17.50 in (44.45 cm)	18.00 in (45.72 cm)	Base: 45% Viscose, 42% Linen, 13% Polyester, Embroidery:100% Viscose
BACKING	PRODUCT NUMBER	COUNTRY	CLEANING CODES
	7623301	India	S

ADDITIONAL PRODUCT NOTES
Exclusive Pattern, Embroidered Textiles Are Not, Guaranteed For Precise Color, Matching And Colorfastness., Color Placement Of Embroidery, May Vary. All Measurements, Quoted For Repeats Are, Approximate.