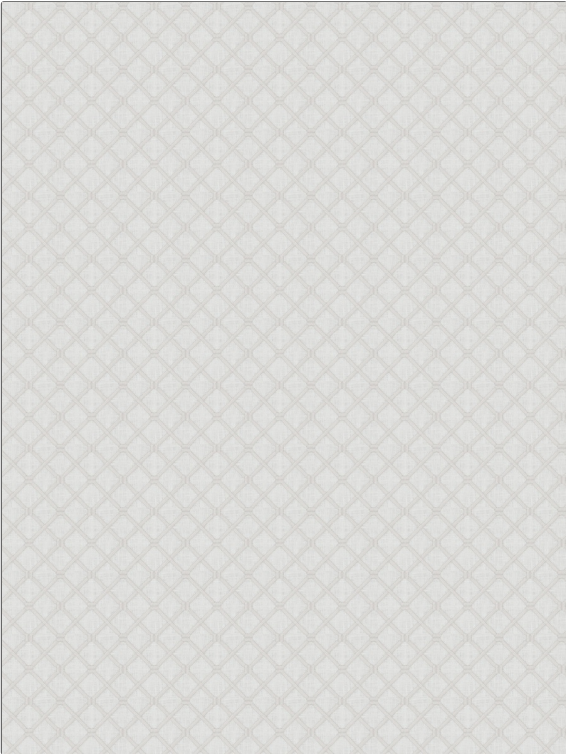


# Fabric Product Details

**PATTERN** **Theremin**  
**COLOR** **Lakeside**

<b>BRAND</b>	<b>APPLICATION</b>
<b>Stroheim</b>	<b>Fabric</b>
<b>USES</b>	<b>CATEGORIES</b>
<b>Bedding, Drapery</b>	<b>Crewels / Embroideries, Linen</b>
<b>BOOK</b>	<b>COLORS</b>
<b>Rhapsody Sea Dune</b>	<b>Grey</b>
<b>DESIGN TYPES</b>	<b>SCALE</b>
<b>Embroidery, Diamond</b>	<b>Small</b>
<b>RAILROADED</b>	
<b>Not Railroaded</b>	



<b>WIDTH</b>	<b>VERTICAL REPEAT</b>	<b>HORIZONTAL REPEAT</b>	<b>CONTENT</b>
<b>49.00 in (124.46 cm)</b>	<b>3.00 in (7.62 cm)</b>	<b>3.00 in (7.62 cm)</b>	<b>Base: 100% Linen, Embroidery: 89% Polyester 11% Viscose</b>
<b>BACKING</b>	<b>PRODUCT NUMBER</b>	<b>DATE BOOKED</b>	<b>COUNTRY</b>
	<b>7626401</b>	<b>02/2017</b>	<b>India</b>
<b>CLEANING CODES</b>			
<b>S</b>			

**ADDITIONAL PRODUCT NOTES**

**Exclusive Pattern, Embroidered Textiles Are Not, Guaranteed For Precise Color, Matching And Colorfastness., Color Placement Of Embroidery, May Vary. All Measurements, Quoted For Repeats Are, Approximate.**