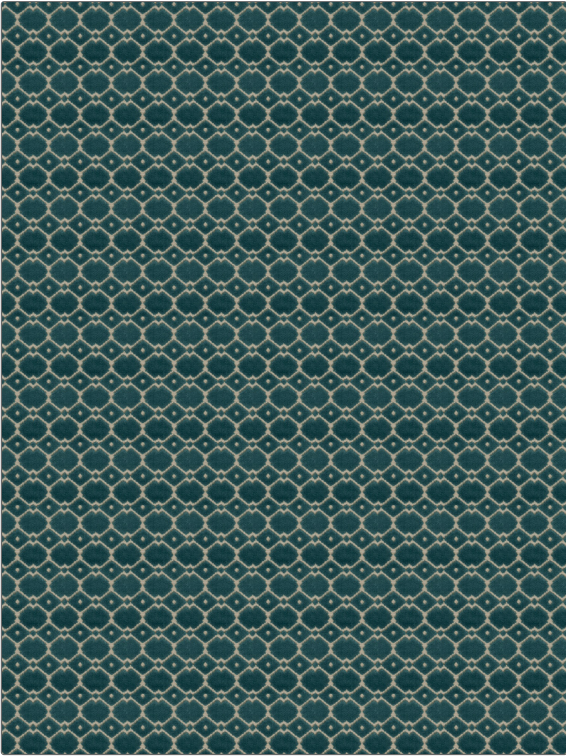


Fabric Product Details

PATTERN Balleroy
COLOR Peacock

BRAND	APPLICATION
Stroheim	Fabric
USES	CATEGORIES
Bedding, Upholstery	Wovens
COLORS	DESIGN TYPES
Aqua / Teal	Geometric, Small Scale Woven, Abstract
SCALE	RAILROADED
Small	Not Railroaded



WIDTH	VERTICAL REPEAT	HORIZONTAL REPEAT	CONTENT
55.00 in (139.70 cm)	1.60 in (4.06 cm)	1.50 in (3.81 cm)	72% Viscose, 23% Polyester, 5% Cotton
BACKING	FIRE CODES	DOUBLE RUBS	PRODUCT NUMBER
	UFAC Class I / NFPA 260	Exceeds 51,000 Double Rubs (Wyzenbeek Method)	8266703
COUNTRY	CLEANING CODES		
India	S		

ADDITIONAL PRODUCT NOTES

Passes 25,000 Martindale Tst, Ca Tb 117-2013, Exclusive Pattern