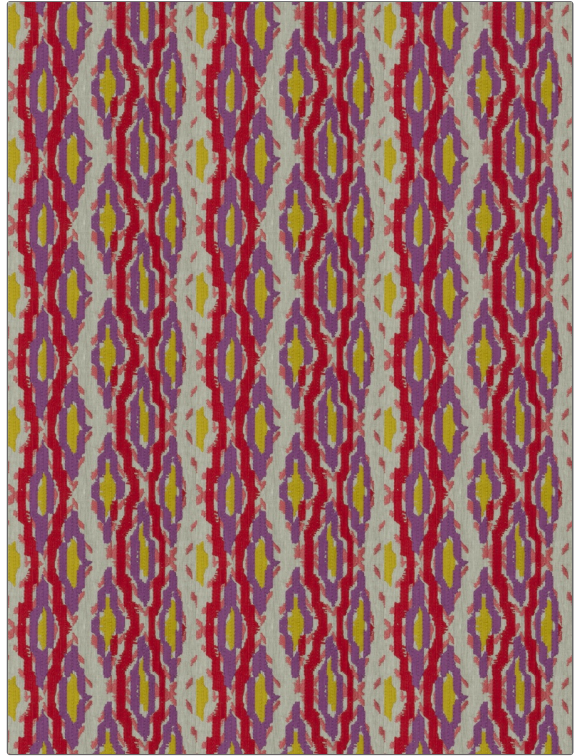


# Fabric Product Details

**PATTERN** Montargis  
**COLOR** Berry

<b>BRAND</b>	<b>APPLICATION</b>
<b>Stroheim</b>	<b>Fabric</b>
<b>USES</b>	<b>CATEGORIES</b>
<b>Bedding, Drapery</b>	<b>Crewels / Embroideries, Linen</b>
<b>BOOK</b>	<b>COLORS</b>
<b>Jardin</b>	<b>Lavender / Purple, Red</b>
<b>DESIGN TYPES</b>	<b>SCALE</b>
<b>Embroidery</b>	<b>Medium</b>
<b>RAILROADED</b>	
<b>Not Railroaded</b>	



<b>WIDTH</b>	<b>VERTICAL REPEAT</b>	<b>HORIZONTAL REPEAT</b>	<b>CONTENT</b>
<b>55.00 in (139.70 cm)</b>	<b>6.30 in (16.00 cm)</b>	<b>9.00 in (22.86 cm)</b>	<b>Embroidery: 80% Cotton, 20% Viscose, Base: 100% Linen</b>
<b>BACKING</b>	<b>PRODUCT NUMBER</b>	<b>DATE BOOKED</b>	<b>COUNTRY</b>
	<b>8269301</b>	<b>02/2017</b>	<b>India</b>
<b>CLEANING CODES</b>			
<b>S</b>			

**ADDITIONAL PRODUCT NOTES**

Exclusive Pattern, Embroidered Textiles Are Not, Guaranteed For Precise Color, Matching And Colorfastness., Color Placement Of Embroidery, May Vary. All Measurements, Quoted For Repeats Are, Approximate.