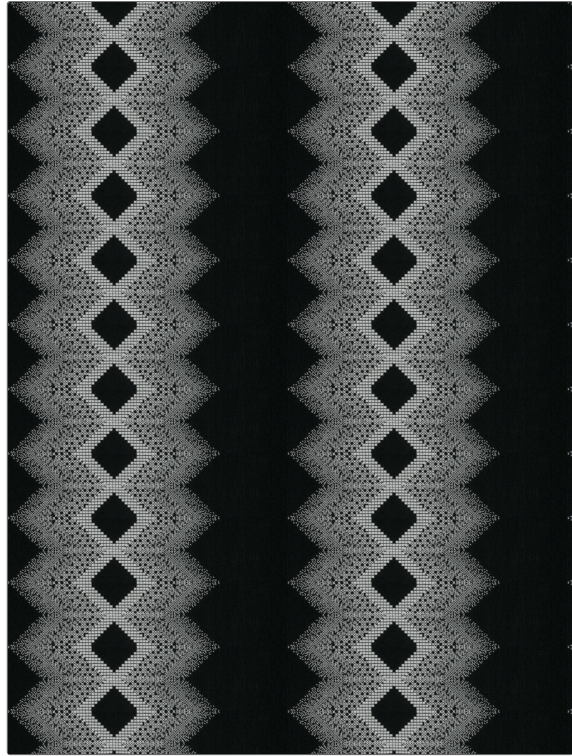


# Fabric Product Details

<b>PATTERN</b>	<b>Soweto</b>
<b>COLOR</b>	<b>Zebra</b>
<b>BRAND</b>	<b>APPLICATION</b>
<b>Stroheim</b>	<b>Fabric</b>
<b>USES</b>	<b>CATEGORIES</b>
<b>Bedding, Drapery, Multipurpose</b>	<b>Crewels / Embroideries</b>
<b>BOOK</b>	<b>COLORS</b>
<b>Black And White</b>	<b>Black, White</b>
<b>DESIGN TYPES</b>	<b>SCALE</b>
<b>Embroidery, Global / Ethnic, Contemporary / Modern, Diamond</b>	<b>Large</b>
<b>RAILROADED</b>	
<b>Not Railroaded</b>	



<b>WIDTH</b>	<b>VERTICAL REPEAT</b>	<b>HORIZONTAL REPEAT</b>	<b>CONTENT</b>
<b>54.00 in (137.16 cm)</b>	<b>6.30 in (16.00 cm)</b>	<b>26.80 in (68.07 cm)</b>	<b>Base: 25% Viscose, 25% Polyester, 25% Linen, 25% Cotton</b>
<b>BACKING</b>	<b>PRODUCT NUMBER</b>	<b>DATE BOOKED</b>	<b>COUNTRY</b>
	<b>8313901</b>	<b>02/2017</b>	<b>India</b>
<b>CLEANING CODES</b>			
<b>S</b>			

**ADDITIONAL PRODUCT NOTES**

**Exclusive Pattern, Embroidered Textiles Are Not, Guaranteed For Precise Color, Matching And Colorfastness., Color Placement Of Embroidery, May Vary. All Measurements, Quoted For Repeats Are, Approximate.**