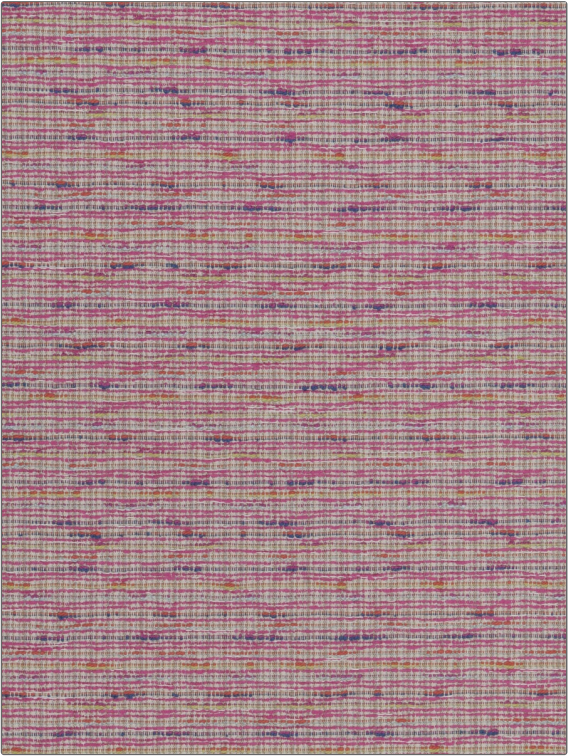


# Fabric Product Details

**PATTERN** Finley  
**COLOR** Fuchsia

<b>BRAND</b>	<b>APPLICATION</b>
Stroheim	Fabric
<b>USES</b>	<b>CATEGORIES</b>
Upholstery	Wovens
<b>BOOK</b>	<b>COLORS</b>
Dana Gibson Crypton Home Coral & Pink	Pink
<b>DESIGN TYPES</b>	<b>RAILROADED</b>
Texture Plain	Not Railroaded



<b>WIDTH</b>	<b>FINISH</b>	<b>VERTICAL REPEAT</b>	<b>HORIZONTAL REPEAT</b>
54.00 in (137.16 cm)	Soil & Stain Repellent Finish	0.00 in (0.00 cm)	0.00 in (0.00 cm)
<b>CONTENT</b>	<b>BACKING</b>	<b>FIRE CODES</b>	<b>DOUBLE RUBS</b>
58% Cotton, 41% Rayon, 1% Nylon		UFAC Class I / NFPA 260	Exceeds 33,000 Double Rubs (Wyzenbeek Method)
<b>PRODUCT NUMBER</b>	<b>DATE BOOKED</b>	<b>COUNTRY</b>	<b>CLEANING CODES</b>
8314403	02/2017	USA	W

**ADDITIONAL PRODUCT NOTES**

Soil & Stain Repellent Finish, Pfas-Free, Anti-Bacterial / Anti-Microbial, Exclusive Pattern