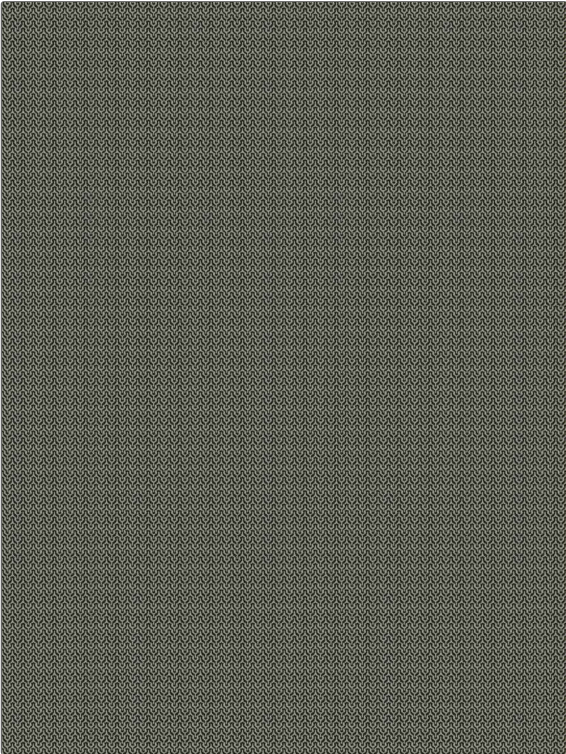


Fabric Product Details

PATTERN Elias Peak
COLOR Night

BRAND	APPLICATION
Stroheim	Fabric
USES	CATEGORIES
Upholstery	Wovens, Solids / Small Scale Patterns, Eco / Environment Plus
BOOK	COLORS
Escape (3 Books) Tumbleweed / Night	Black, White
DESIGN TYPES	SCALE
Global / Ethnic, Herringbone, Small Scale Woven	Small
RAILROADED	
Not Railroaded	



WIDTH	VERTICAL REPEAT	HORIZONTAL REPEAT	CONTENT
54.00 in (137.16 cm)	0.50 in (1.27 cm)	0.50 in (1.27 cm)	60% Recycled Cotton, 40% Recycled Polyester
BACKING	FIRE CODES	DOUBLE RUBS	PRODUCT NUMBER
	UFAC Class I / NFPA 260	Exceeds 15,000 Double Rubs (Wyzenbeek Method)	8327004
DATE BOOKED	COUNTRY	CLEANING CODES	
02/2023	USA	S	

ADDITIONAL PRODUCT NOTES

Ca Tb 117-2013, Exclusive Pattern, Eco / Environment Plus