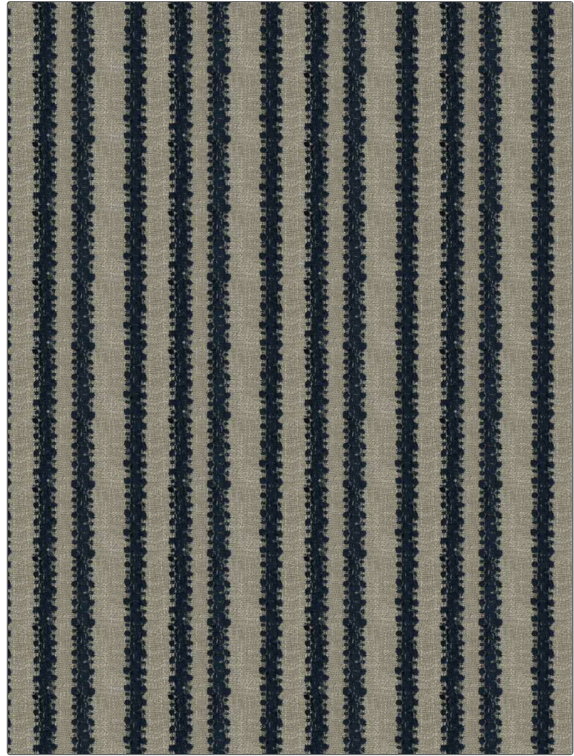


Fabric Product Details

PATTERN Yoomee
COLOR 02

BRAND	APPLICATION
Stroheim	Fabric
USES	CATEGORIES
Upholstery	Wovens, Solids / Small Scale Patterns
COLORS	DESIGN TYPES
Blue, Linen	Global / Ethnic
SCALE	DIRECTION SHOWN
Medium	Railroaded



WIDTH	VERTICAL REPEAT	HORIZONTAL REPEAT	CONTENT
54.00 in (137.16 cm)	0.00 in (0.00 cm)	2.75 in (6.98 cm)	47% Viscose, 33% Cotton, 16% Linen, 4% Polyester
BACKING	FIRE CODES	DOUBLE RUBS	PRODUCT NUMBER
	UFAC Class I / NFPA 260	Exceeds 42,000 Double Rubs (Wyzenbeek Method)	8333902
COUNTRY	CLEANING CODES		
Turkey	S		

ADDITIONAL PRODUCT NOTES

Passes 20,000 Martindale Tst, Ca Tb 117-2013, Shown Railroaded, Exclusive Pattern