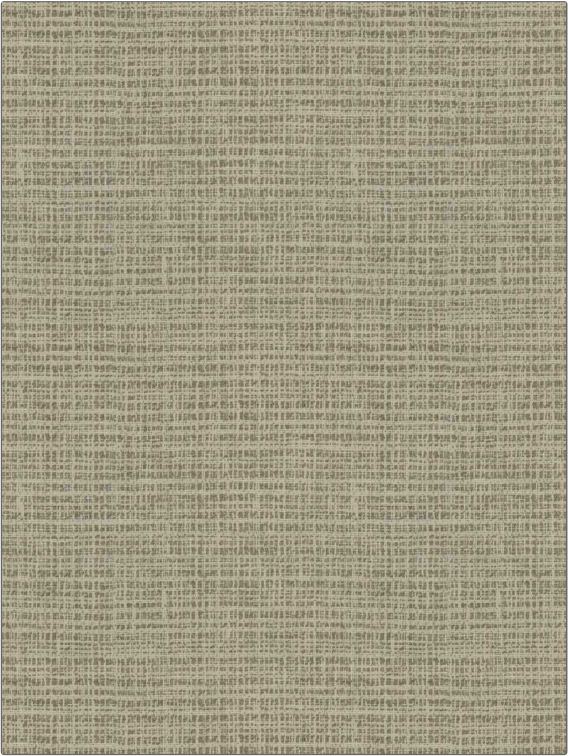


Fabric Product Details

PATTERN	Chesler Tumbleweed
COLOR	
BRAND	APPLICATION
Stroheim	Fabric
USES	CATEGORIES
Upholstery	Wovens, Solids / Small Scale Patterns
BOOK	COLORS
Escape (3 Books) Tumbleweed / Night	Linen, White
DESIGN TYPES	RAILOADED
Small Scale Woven, Texture Plain	Not Railroaded



WIDTH	VERTICAL REPEAT	HORIZONTAL REPEAT	CONTENT
54.00 in (137.16 cm)	0.00 in (0.00 cm)	0.00 in (0.00 cm)	55% Cotton, 21% Wool, 21% Linen, 3% Polyamide
BACKING	FIRE CODES	DOUBLE RUBS	PRODUCT NUMBER
	UFAC Class I / NFPA 260	Exceeds 12,000 Double Rubs (Wyzenbeek Method)	8334303
DATE BOOKED	COUNTRY	CLEANING CODES	
02/2023	Turkey	S	

ADDITIONAL PRODUCT NOTES
Exclusive Pattern