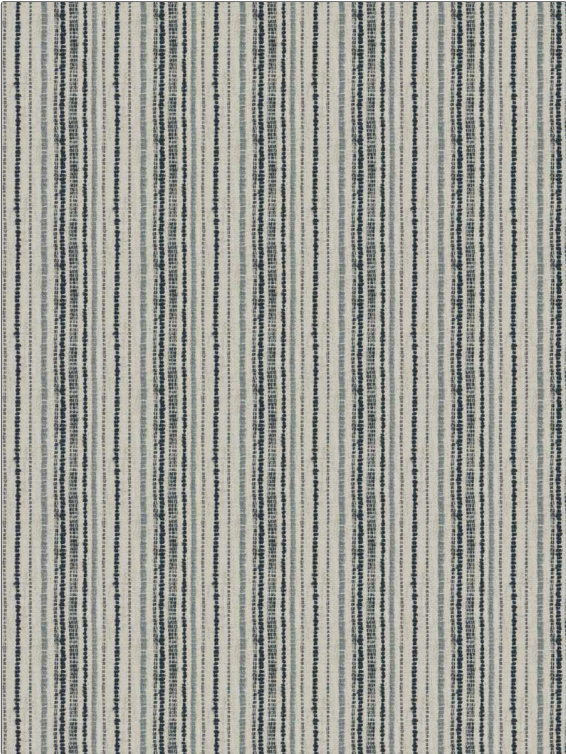


Fabric Product Details

PATTERN	Bozeman
COLOR	Mineral
BRAND	APPLICATION
Stroheim	Fabric
USES	CATEGORIES
Upholstery	Wovens, Solids / Small Scale Patterns
BOOK	COLORS
Escape (3 Books) Mineral / Blue Ridge	Blue, Light Blue
DESIGN TYPES	SCALE
Global / Ethnic, Stripes	Small
RAILOADED	
Railroaded	



WIDTH	VERTICAL REPEAT	HORIZONTAL REPEAT	CONTENT
54.00 in (137.16 cm)	0.00 in (0.00 cm)	4.75 in (12.06 cm)	37% Polyester, 29% Acrylic, 27% Cotton, 7% Linen
BACKING	FIRE CODES	DOUBLE RUBS	PRODUCT NUMBER
	UFAC Class I / NFPA 260	Exceeds 51,000 Double Rubs (Wyzenbeek Method)	8334803
DATE BOOKED	COUNTRY	CLEANING CODES	
02/2023	Turkey	S	

ADDITIONAL PRODUCT NOTES
Passes 25,000 Martindale Tst, Ca Tb 117-2013, Shown Railroaded, Exclusive Pattern