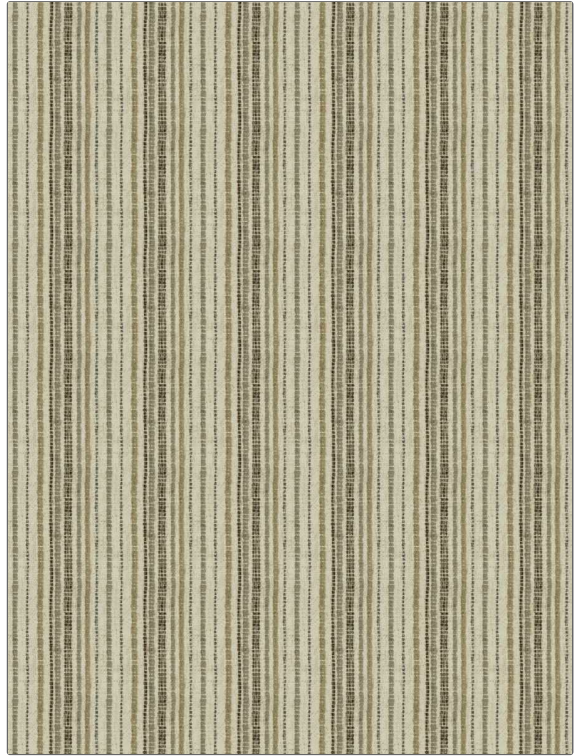


Fabric Product Details

PATTERN Bozeman
COLOR 01

BRAND	APPLICATION
Stroheim	Fabric
USES	CATEGORIES
Upholstery	Wovens, Solids / Small Scale Patterns
COLORS	DESIGN TYPES
Brown, Linen	Global / Ethnic, Stripes
SCALE	RAILROADED
Small	Railroaded



WIDTH	VERTICAL REPEAT	HORIZONTAL REPEAT	CONTENT
54.00 in (137.16 cm)	0.00 in (0.00 cm)	4.75 in (12.06 cm)	37% Polyester, 29% Acrylic, 27% Cotton, 7% Linen
BACKING	FIRE CODES	DOUBLE RUBS	PRODUCT NUMBER
	UFAC Class I / NFPA 260	Exceeds 51,000 Double Rubs (Wyzenbeek Method)	8335101
COUNTRY	CLEANING CODES		
Turkey	S		

ADDITIONAL PRODUCT NOTES

Passes 25,000 Martindale Tst, Ca Tb 117-2013, Shown Railroaded, Exclusive Pattern