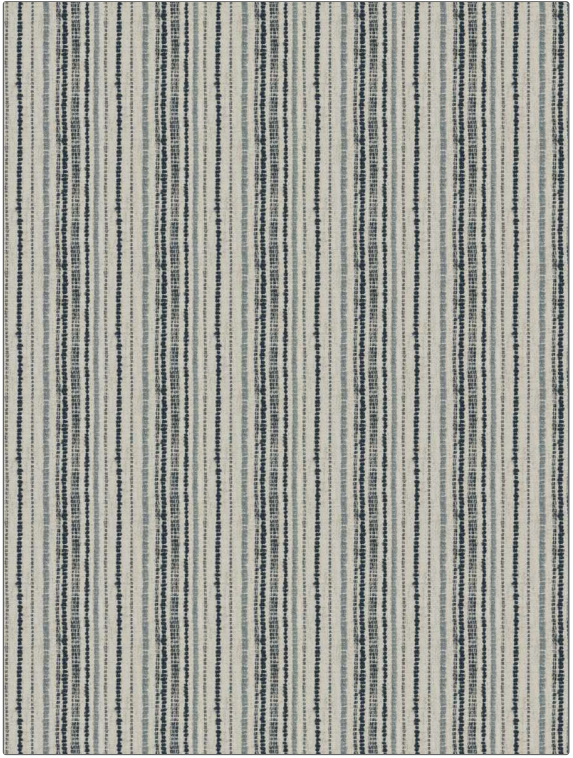


Fabric Product Details

PATTERN Bozeman
COLOR 03

| | |
|------------------|---------------------------------------|
| BRAND | APPLICATION |
| Stroheim | Fabric |
| USES | CATEGORIES |
| Upholstery | Wovens, Solids / Small Scale Patterns |
| COLORS | DESIGN TYPES |
| Blue, Light Blue | Global / Ethnic, Stripes |
| SCALE | RAILROADED |
| Small | Railroaded |



| | | | |
|----------------------|-------------------------|---|--|
| WIDTH | VERTICAL REPEAT | HORIZONTAL REPEAT | CONTENT |
| 54.00 in (137.16 cm) | 0.00 in (0.00 cm) | 4.75 in (12.06 cm) | 37% Polyester, 29% Acrylic, 27% Cotton, 7% Linen |
| BACKING | FIRE CODES | DOUBLE RUBS | PRODUCT NUMBER |
| | UFAC Class I / NFPA 260 | Exceeds 51,000 Double Rubs (Wyzenbeek Method) | 8335103 |
| COUNTRY | CLEANING CODES | | |
| Turkey | S | | |

ADDITIONAL PRODUCT NOTES

Passes 25,000 Martindale Tst, Ca Tb 117-2013, Shown Railroaded, Exclusive Pattern