

Fabric Product Details

PATTERN **Cedaredge**
COLOR **Tumbleweed**

BRAND

Stroheim

APPLICATION

Fabric

USES

Upholstery

CATEGORIES

Wovens

BOOK

**Escape (3 Books)
Tumbleweed / Night**

COLORS

Black, Linen

DESIGN TYPES

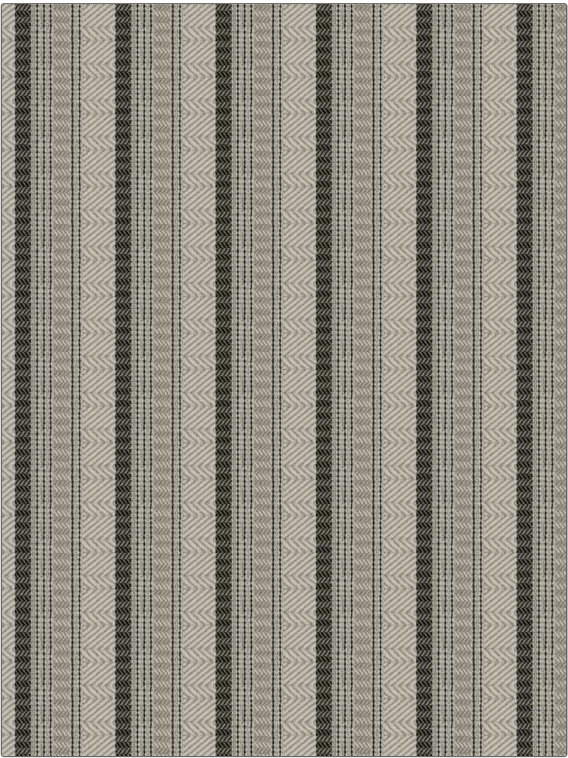
**Global / Ethnic,
Herringbone, Stripes,
Chevron**

SCALE

Medium

RAILOADED

Railroaded



WIDTH

55.00 in (139.70 cm)

VERTICAL REPEAT

2.00 in (5.08 cm)

HORIZONTAL REPEAT

5.00 in (12.70 cm)

CONTENT

**47% Recycled Cotton, 31%
Recycled Polyester, 11%
Wool, 11% Nylon**

BACKING

100% Latex Backing

FIRE CODES

UFAC Class I / NFPA 260

DOUBLE RUBS

**Exceeds 15,000 Double
Rubs (Wyzenbeek Method)**

PRODUCT NUMBER

8342001

DATE BOOKED

02/2023

COUNTRY

USA

CLEANING CODES

S

ADDITIONAL PRODUCT NOTES

Ca Tb 117-2013, 100% Latex Backing, Shown Railroaded, Exclusive Pattern, Eco / Environment Plus