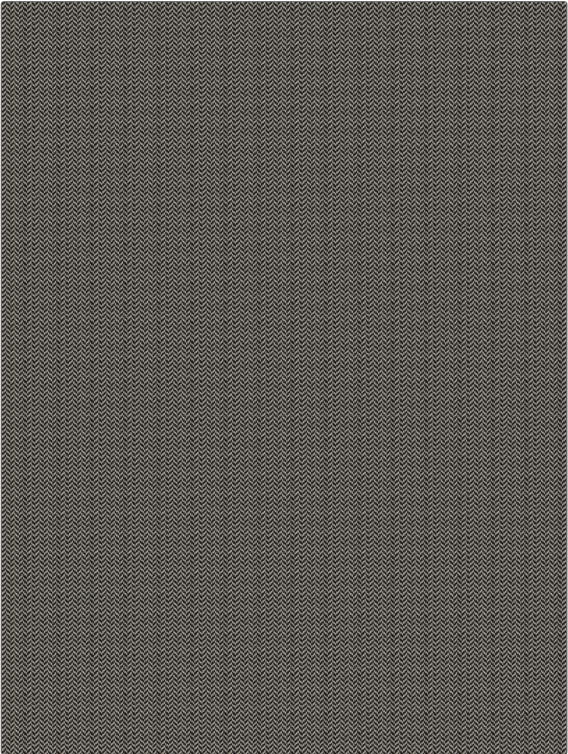


Fabric Product Details

PATTERN **Belo Herringbone**
COLOR **Pepper**

BRAND	APPLICATION
Stroheim	Fabric
USES	CATEGORIES
Bedding, Drapery	Wovens
BOOK	COLORS
Black And White	Black, Linen
DESIGN TYPES	SCALE
Herringbone	Small
RAILROADED	
Not Railroaded	



WIDTH	VERTICAL REPEAT	HORIZONTAL REPEAT	CONTENT
55.00 in (139.70 cm)	0.25 in (0.64 cm)	0.40 in (1.02 cm)	58% Viscose, 25% Linen, 14% Cotton, 3% Polyester
BACKING	FIRE CODES	DOUBLE RUBS	PRODUCT NUMBER
	UFAC Class I / NFPA 260	Exceeds 42,000 Double Rubs (Wyzenbeek Method)	8344001
DATE BOOKED	COUNTRY	CLEANING CODES	
02/2017	India	S	

ADDITIONAL PRODUCT NOTES
Passes 20,000 Martindale Tst, Exclusive Pattern