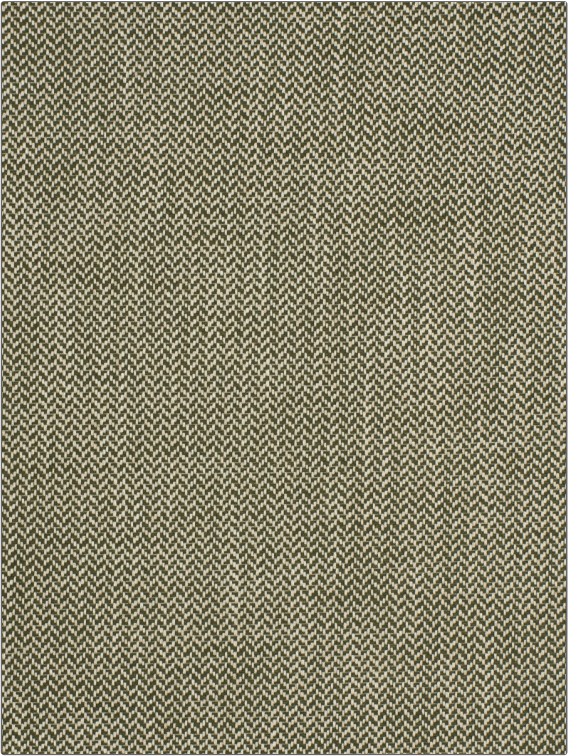


Fabric Product Details

PATTERN	Belo Herringbone
COLOR	Olive

BRAND	APPLICATION
Stroheim	Fabric
USES	CATEGORIES
Bedding, Drapery	Wovens
COLORS	DESIGN TYPES
Green	Herringbone
SCALE	RAILROADED
Small	Not Railroaded



WIDTH	VERTICAL REPEAT	HORIZONTAL REPEAT	CONTENT
55.00 in (139.70 cm)	0.25 in (0.64 cm)	0.40 in (1.02 cm)	58% Viscose, 25% Linen, 14% Cotton, 3% Polyester
BACKING	FIRE CODES	DOUBLE RUBS	PRODUCT NUMBER
	UFAC Class I / NFPA 260	Exceeds 42,000 Double Rubs (Wyzenbeek Method)	8344002
COUNTRY	CLEANING CODES		
India	S		

ADDITIONAL PRODUCT NOTES
Passes 20,000 Martindale Tst, Exclusive Pattern