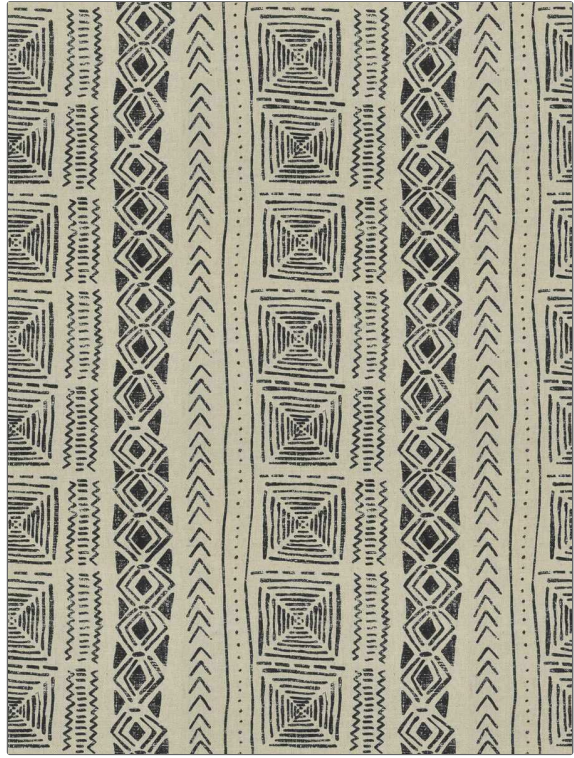


Fabric Product Details

PATTERN	Sinawava
COLOR	Night
BRAND	APPLICATION
Stroheim	Fabric
USES	CATEGORIES
Bedding, Drapery, Multipurpose, Upholstery	Prints
BOOK	COLORS
Escape (3 Books) Tumbleweed / Night	Black
DESIGN TYPES	SCALE
Geometric, Global / Ethnic, Print Pattern	Medium
DIRECTION SHOWN	
Up the Bolt	



WIDTH	VERTICAL REPEAT	HORIZONTAL REPEAT	CONTENT
54.00 in (137.16 cm)	4.50 in (11.43 cm)	13.00 in (33.02 cm)	42% Cotton, 20% Polyester, 20% Linen, 18% Rayon
BACKING	FIRE CODES	DOUBLE RUBS	PRODUCT NUMBER
	UFAC Class I / NFPA 260	Exceeds 30,000 Double Rubs (Wyzenbeek Method)	8402102
DATE BOOKED	COUNTRY	CLEANING CODES	
02/2023	India	S	

ADDITIONAL PRODUCT NOTES
Ca Tb 117-2013, Exclusive Pattern