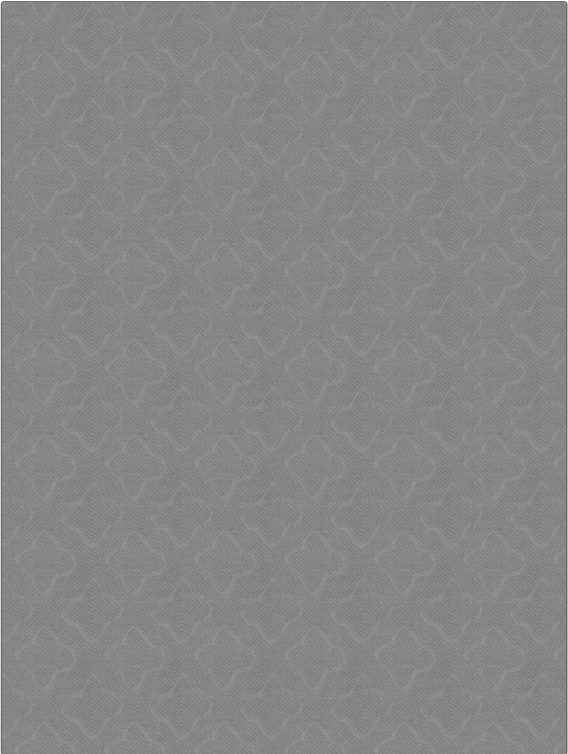


# Fabric Product Details

**PATTERN** Tanner  
**COLOR** 04

|               |                     |
|---------------|---------------------|
| <b>BRAND</b>  | <b>APPLICATION</b>  |
| Stroheim      | Fabric              |
| <b>USES</b>   | <b>CATEGORIES</b>   |
| Upholstery    | Matelasse, Wovens   |
| <b>COLORS</b> | <b>DESIGN TYPES</b> |
| Grey          | Diamond             |
| <b>SCALE</b>  | <b>RAILROADED</b>   |
| Medium        | Not Railroaded      |



|                           |                |                         |   |
|---------------------------|----------------|-------------------------|---|
| <b>WIDTH</b>              | <b>FINISH</b>  | <b>VERTICAL REPEAT</b>  | <b>HORIZONTAL REPEAT</b>                      |
| 54.00 in (137.16 cm)      | Crypton Home   | 14.50 in (36.83 cm)     | 4.30 in (10.92 cm)                            |
| <b>CONTENT</b>            | <b>BACKING</b> | <b>FIRE CODES</b>       | <b>DOUBLE RUBS</b>                            |
| 62% Cotton, 38% Polyester |                | UFAC Class I / NFPA 260 | Exceeds 39,000 Double Rubs (Wyzenbeek Method) |
| <b>PRODUCT NUMBER</b>     | <b>COUNTRY</b> | <b>CLEANING CODES</b>   |   |
| 8596404                   | USA            | W                       |   |

**ADDITIONAL PRODUCT NOTES**

Crypton Home, Exclusive Pattern