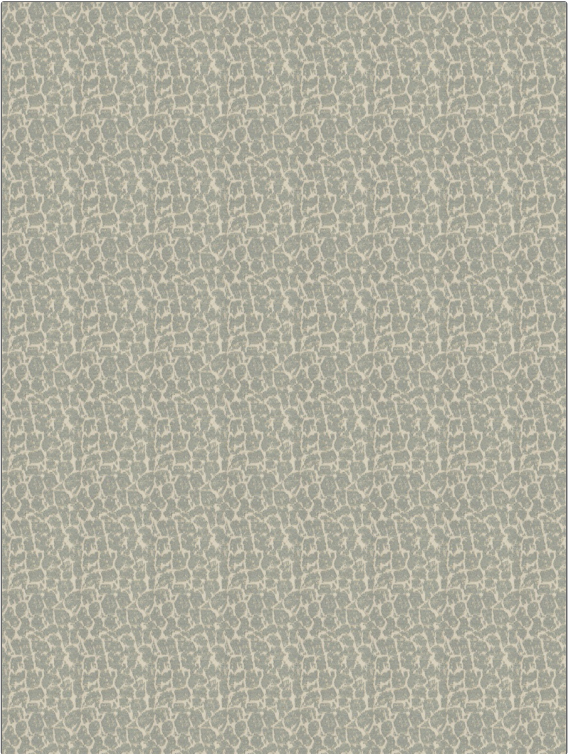


Fabric Product Details

PATTERN Seed
COLOR Ice

BRAND	APPLICATION
Stroheim	Fabric
USES	CATEGORIES
Upholstery	Wovens, Linen
BOOK	COLORS
Scad Design Incubation	Grey
DESIGN TYPES	SCALE
Small Scale Woven, Animal Skins	Small
RAILROADED	
Not Railroaded	



WIDTH	VERTICAL REPEAT	HORIZONTAL REPEAT	CONTENT
54.00 in (137.16 cm)	5.40 in (13.72 cm)	3.50 in (8.89 cm)	51% Cotton, 49% Polyester
BACKING	FIRE CODES	DOUBLE RUBS	PRODUCT NUMBER
	UFAC Class I / NFPA 260	Exceeds 51,000 Double Rubs (Wyzenbeek Method)	8978103
DATE BOOKED	COUNTRY	CLEANING CODES	
11/2017	Italy	S	

ADDITIONAL PRODUCT NOTES

Ca Tb 117-2013, Exclusive Pattern