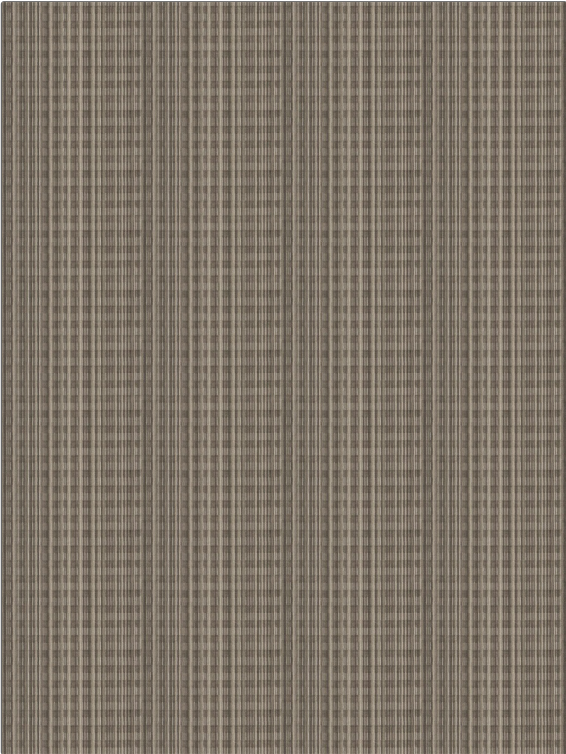


# Fabric Product Details

**PATTERN** Livingstone  
**COLOR** Taupe

<b>BRAND</b>	<b>APPLICATION</b>
Stroheim	Fabric
<b>USES</b>	<b>CATEGORIES</b>
Upholstery	Velvet / Grospoint, Wovens
<b>BOOK</b>	<b>COLORS</b>
Texturefield	Taupe / Tan
<b>DESIGN TYPES</b>	<b>SCALE</b>
Stripes, Contemporary / Modern, Abstract	Small
<b>RAILROADED</b>	
Not Railroaded	



<b>WIDTH</b>	<b>VERTICAL REPEAT</b>	<b>HORIZONTAL REPEAT</b>	<b>CONTENT</b>
54.00 in (137.16 cm)	1.50 in (3.81 cm)	6.70 in (17.02 cm)	75% Viscose, 25% Polyester
<b>BACKING</b>	<b>DOUBLE RUBS</b>	<b>PRODUCT NUMBER</b>	<b>DATE BOOKED</b>
	Exceeds 9,000 Double Rubs (Wyzenbeek Method)	8978302	09/2017
<b>COUNTRY</b>	<b>CLEANING CODES</b>		
Belgium	S		

**ADDITIONAL PRODUCT NOTES**  
 Passes 25,000 Martindale Tst, Ca Tb 117-2013, Exclusive Pattern