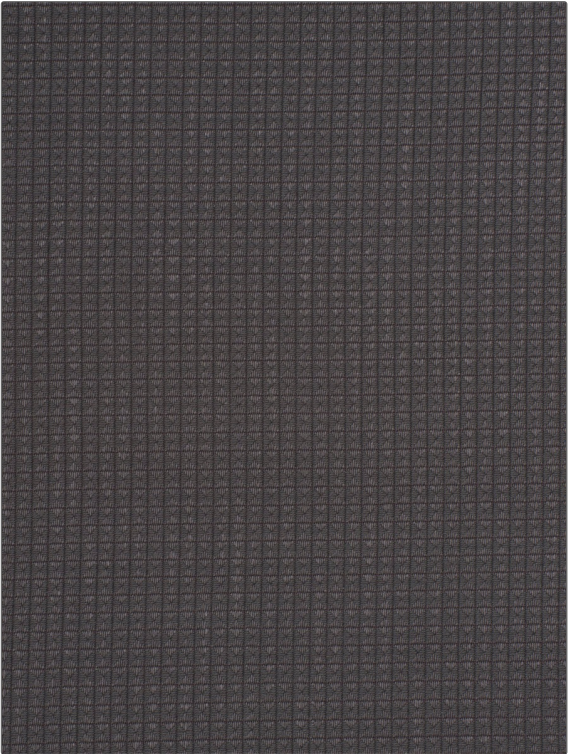


# Fabric Product Details

**PATTERN** Mistaya  
**COLOR** Twilight

<b>BRAND</b> Stroheim	<b>APPLICATION</b> Fabric
<b>USES</b> Upholstery	<b>CATEGORIES</b> Wovens, Solids / Small Scale Patterns
<b>BOOK</b> Texturefield	<b>COLORS</b> Lavender / Purple
<b>DESIGN TYPES</b> Small Scale Woven, Solid, Diamond	<b>SCALE</b> Small
<b>RAILROADED</b> Not Railroaded	



<b>WIDTH</b> 57.00 in (144.78 cm)	<b>VERTICAL REPEAT</b> 0.40 in (1.02 cm)	<b>HORIZONTAL REPEAT</b> 0.40 in (1.02 cm)	<b>CONTENT</b> 51% Cotton, 34% Viscose, 15% Linen
<b>BACKING</b>	<b>FIRE CODES</b> UFAC Class II	<b>DOUBLE RUBS</b> Exceeds 18,000 Double Rubs (Wyzenbeek Method)	<b>PRODUCT NUMBER</b> 8978901
<b>DATE BOOKED</b> 09/2017	<b>COUNTRY</b> India	<b>CLEANING CODES</b> S	

**ADDITIONAL PRODUCT NOTES**  
Passes 30,000 Martindale Tst, Exclusive Pattern