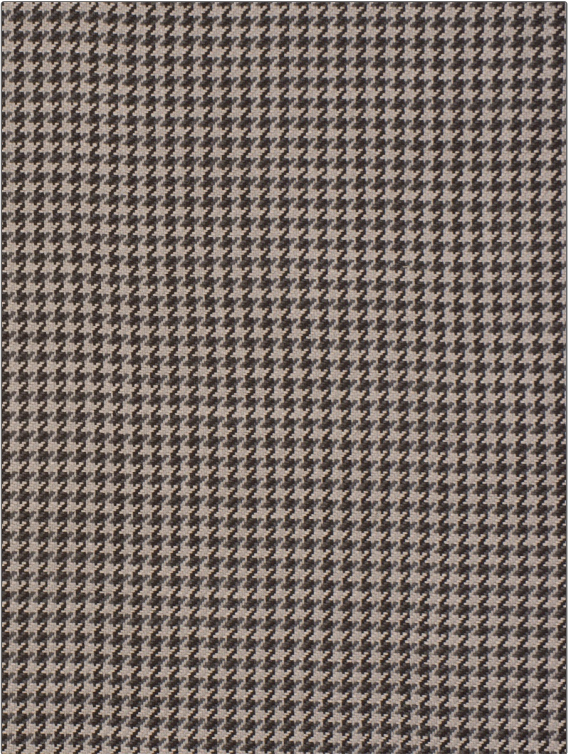


Fabric Product Details

PATTERN Agawa
COLOR Twilight

BRAND Stroheim	APPLICATION Fabric
USES Upholstery	CATEGORIES Wovens, Solids / Small Scale Patterns
BOOK Texturefield	COLORS Lavender / Purple
DESIGN TYPES Small Scale Woven, Houndstooth	SCALE Small
RAILROADED Not Railroaded	



WIDTH 53.00 in (134.62 cm)	VERTICAL REPEAT 0.50 in (1.27 cm)	HORIZONTAL REPEAT 0.40 in (1.02 cm)	CONTENT 70% Viscose, 30% Linen
BACKING	FIRE CODES UFAC Class II	DOUBLE RUBS Exceeds 30,000 Double Rubs	PRODUCT NUMBER 8979403
DATE BOOKED 09/2017	COUNTRY India	CLEANING CODES S	

ADDITIONAL PRODUCT NOTES
Passes 30,000 Martindale Tst, Exclusive Pattern