

Fabric Product Details

PATTERN **Agawa**
COLOR **Cypress**

BRAND

Stroheim

APPLICATION

Fabric

USES

Upholstery

CATEGORIES

**Wovens, Solids / Small
Scale Patterns**

BOOK

Texturefield

COLORS

Brown, Green

DESIGN TYPES

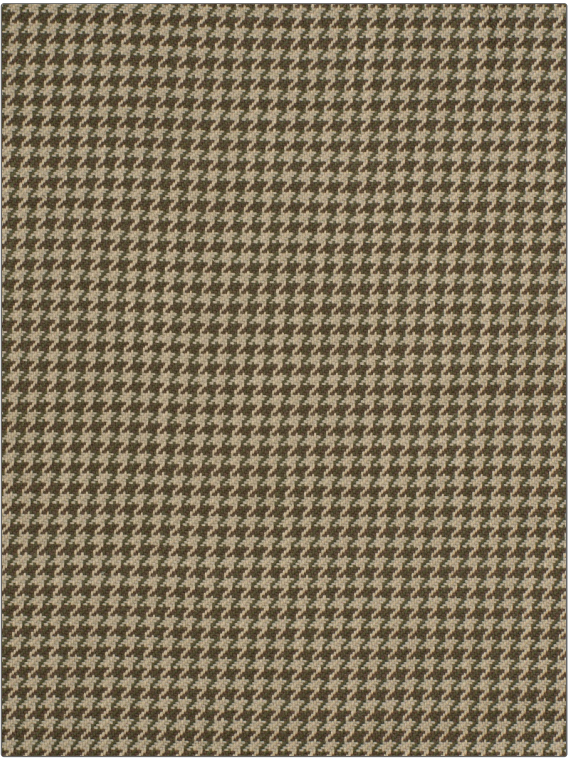
**Small Scale Woven,
Houndstooth**

SCALE

Small

RAILROADED

Not Railroaded



WIDTH

53.00 in (134.62 cm)

VERTICAL REPEAT

0.50 in (1.27 cm)

HORIZONTAL REPEAT

0.40 in (1.02 cm)

CONTENT

70% Viscose, 30% Linen

BACKING

FIRE CODES

UFAC Class II

DOUBLE RUBS

**Exceeds 30,000 Double
Rubs**

PRODUCT NUMBER

8979404

DATE BOOKED

09/2017

COUNTRY

India

CLEANING CODES

S

ADDITIONAL PRODUCT NOTES

Passes 30,000 Martindale Tst, Exclusive Pattern