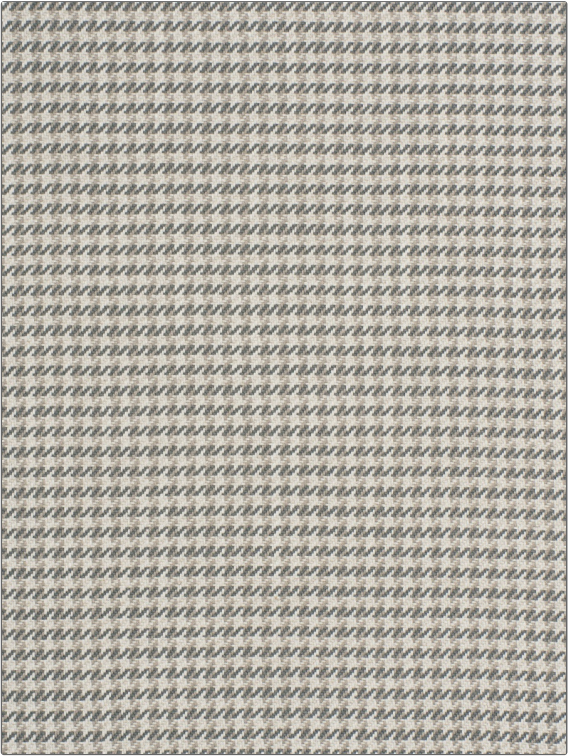


Fabric Product Details

PATTERN	Agawa
COLOR	02

BRAND	APPLICATION
Stroheim	Fabric
USES	CATEGORIES
Upholstery	Wovens, Solids / Small Scale Patterns
COLORS	DESIGN TYPES
Grey	Small Scale Woven, Houndstooth
SCALE	RAILROADED
Small	Not Railroaded



WIDTH	VERTICAL REPEAT	HORIZONTAL REPEAT	CONTENT
53.00 in (134.62 cm)	0.50 in (1.27 cm)	0.40 in (1.02 cm)	70% Viscose, 30% Linen
BACKING	FIRE CODES	DOUBLE RUBS	PRODUCT NUMBER
	UFAC Class II	Exceeds 30,000 Double Rubs	8979502
COUNTRY	CLEANING CODES		
India	S		

ADDITIONAL PRODUCT NOTES
Passes 30,000 Martindale Tst, Exclusive Pattern