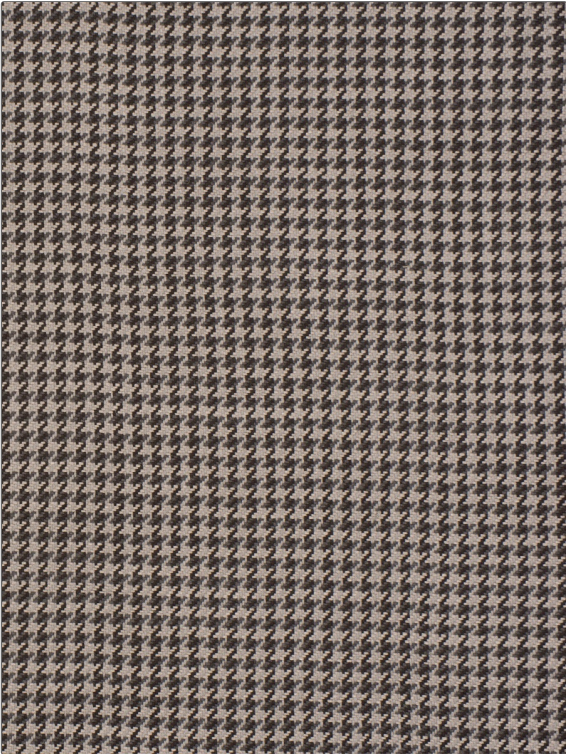


Fabric Product Details

PATTERN Agawa
COLOR 03

BRAND Stroheim	APPLICATION Fabric
USES Upholstery	CATEGORIES Wovens, Solids / Small Scale Patterns
COLORS Lavender / Purple	DESIGN TYPES Small Scale Woven, Houndstooth
SCALE Small	RAILROADED Not Railroaded



WIDTH 53.00 in (134.62 cm)	VERTICAL REPEAT 0.50 in (1.27 cm)	HORIZONTAL REPEAT 0.40 in (1.02 cm)	CONTENT 70% Viscose, 30% Linen
BACKING	FIRE CODES UFAC Class II	DOUBLE RUBS Exceeds 30,000 Double Rubs	PRODUCT NUMBER 8979503
COUNTRY India	CLEANING CODES S		

ADDITIONAL PRODUCT NOTES
 Passes 30,000 Martindale Tst, Exclusive Pattern