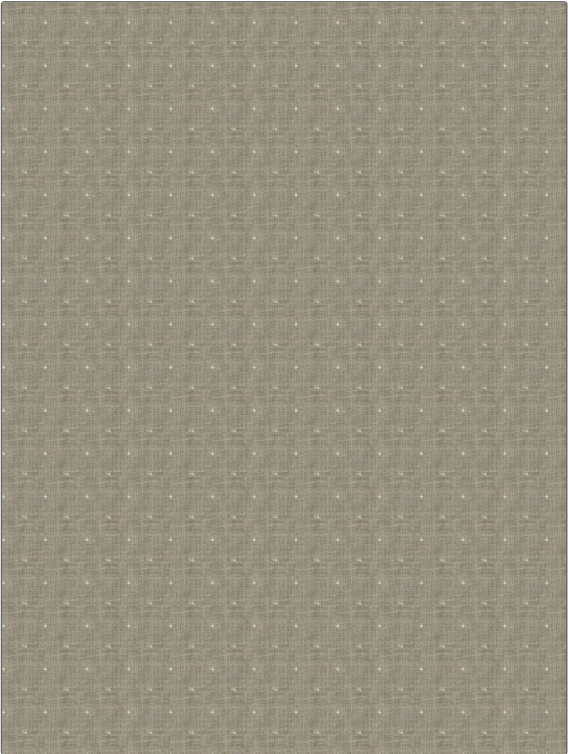


Fabric Product Details

PATTERN Rootstock
COLOR Latte

BRAND	APPLICATION
Stroheim	Fabric
USES	CATEGORIES
Drapery	Sheer, Crewels / Embroideries, Linen
BOOK	COLORS
Sheer Illusion	Linen
DESIGN TYPES	SCALE
Embroidery, Dots / Circles	Small
RAILROADED	
Not Railroaded	



WIDTH	VERTICAL REPEAT	HORIZONTAL REPEAT	CONTENT
54.00 in (137.16 cm)	2.00 in (5.08 cm)	2.00 in (5.08 cm)	Embroidery: 100% Polyester, Base: 100% Linen
BACKING	PRODUCT NUMBER	DATE BOOKED	COUNTRY
	9327503	03/2018	India
CLEANING CODES			
S			

ADDITIONAL PRODUCT NOTES

Embroidered Textiles Are Not, Guaranteed For Precise Color, Matching And Colorfastness., Color Placement Of Embroidery, May Vary. All Measurements, Quoted For Repeats Are, Approximate., Natural Linens Have, Characteristic Imperfections., They Are Not Guaranteed