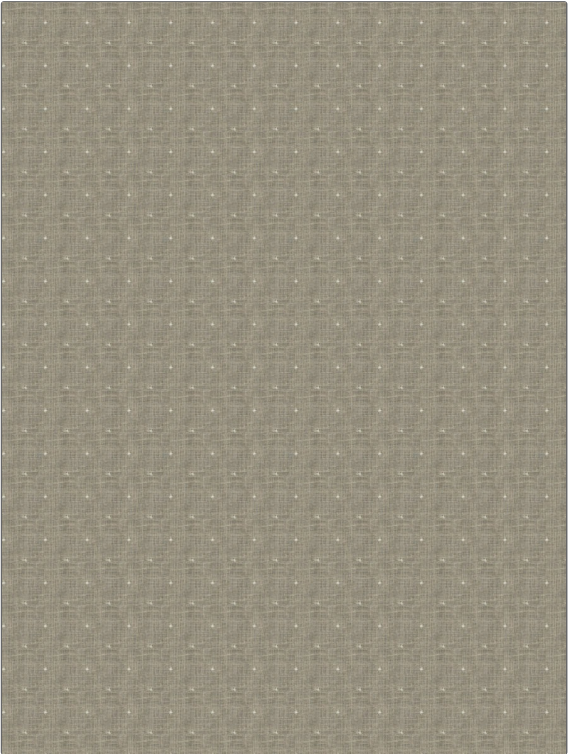


# Fabric Product Details

**PATTERN** Rootstock  
**COLOR** 03

<b>BRAND</b>	<b>APPLICATION</b>
Stroheim	Fabric
<b>USES</b>	<b>CATEGORIES</b>
Drapery	Sheer, Crewels / Embroideries, Linen
<b>COLORS</b>	<b>DESIGN TYPES</b>
Linen	Embroidery, Dots / Circles
<b>SCALE</b>	<b>RAILROADED</b>
Small	Not Railroaded



<b>WIDTH</b>	<b>VERTICAL REPEAT</b>	<b>HORIZONTAL REPEAT</b>	<b>CONTENT</b>
54.00 in (137.16 cm)	2.00 in (5.08 cm)	2.00 in (5.08 cm)	Embroidery: 100% Polyester, Base: 100% Linen
<b>BACKING</b>	<b>PRODUCT NUMBER</b>	<b>COUNTRY</b>	<b>CLEANING CODES</b>
	9327603	India	S

**ADDITIONAL PRODUCT NOTES**

Embroidered Textiles Are Not, Guaranteed For Precise Color, Matching And Colorfastness., Color Placement Of Embroidery, May Vary. All Measurements, Quoted For Repeats Are, Approximate., Natural Linens Have, Characteristic Imperfections., They Are Not Guaranteed