

# Fabric Product Details

**PATTERN** 05350  
**COLOR** 02

**BRAND**

**Trend**

**APPLICATION**

**Fabric**

**USES**

**Upholstery**

**CATEGORIES**

**Wovens**

**COLORS**

**Blue**

**DESIGN TYPES**

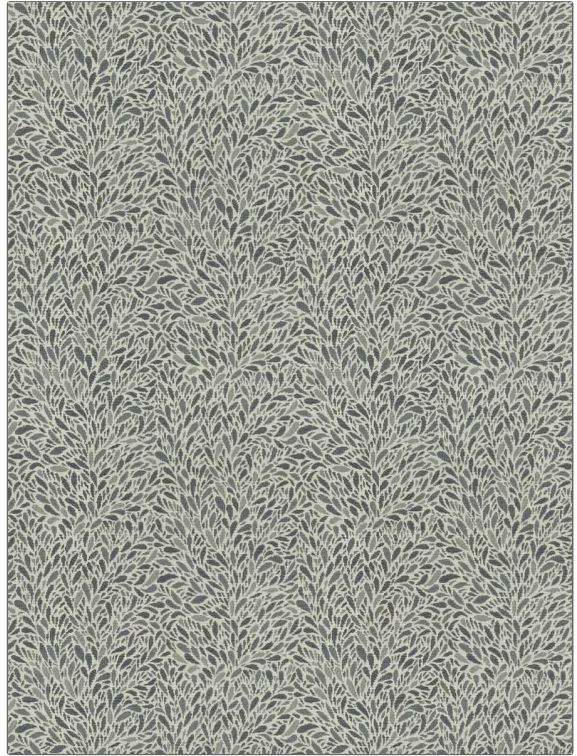
**Leaves, Abstract**

**SCALE**

**Small**

**RAILROADED**

**Not Railroaded**



**WIDTH**

**54.00 in (137.16 cm)**

**VERTICAL REPEAT**

**14.50 in (36.83 cm)**

**HORIZONTAL REPEAT**

**13.50 in (34.29 cm)**

**CONTENT**

**100% Polyester**

**BACKING**

**100% Acrylic Backing**

**FIRE CODES**

**Does Not Contain FR Chemicals, UFAC Class I / NFPA 260**

**DOUBLE RUBS**

**Exceeds 81,000 Double Rubs (Wyzenbeek Method)**

**PRODUCT NUMBER**

**1331002**

**COUNTRY**

**China**

**CLEANING CODES**

**S**

**ADDITIONAL PRODUCT NOTES**

**Pfas-Free, Ca Tb 117-2013, 100% Acrylic Backing**