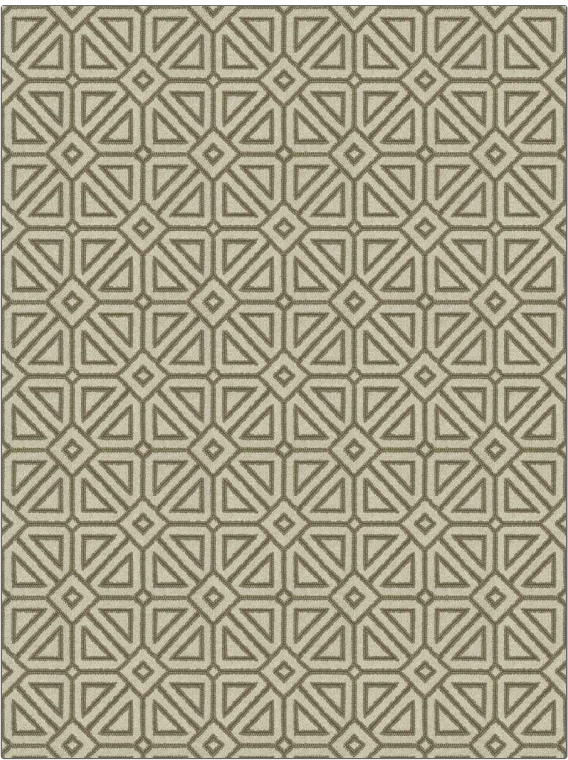


Fabric Product Details

| | |
|---|------------------------------|
| PATTERN | 05334 |
| COLOR | Almond |
| BRAND | APPLICATION |
| Trend | Fabric |
| USES | CATEGORIES |
| Upholstery | Wovens |
| BOOK | COLORS |
| Wovens By Color Vol. V (3 Books) Wheat / Shadow | Beige, Taupe / Tan, Metallic |
| DESIGN TYPES | SCALE |
| Geometric, Lattice / Fretwork | Medium |
| RAILOADED | |
| Not Railroaded | |



| | | | |
|----------------------|--------------------|---|-------------------------|
| WIDTH | VERTICAL REPEAT | HORIZONTAL REPEAT | CONTENT |
| 55.00 in (139.70 cm) | 7.25 in (18.42 cm) | 6.75 in (17.14 cm) | 97% Polyester, 3% Lurex |
| BACKING | FIRE CODES | DOUBLE RUBS | PRODUCT NUMBER |
| | Passes NFPA 260 | Exceeds 36,000 Double Rubs (Wyzenbeek Method) | 1360903 |
| DATE BOOKED | COUNTRY | CLEANING CODES | |
| 02/2023 | Turkey | S | |

| |
|--|
| ADDITIONAL PRODUCT NOTES |
| Ca Tb 117-2013, Exclusive Pattern, Tumble Dried Finish |