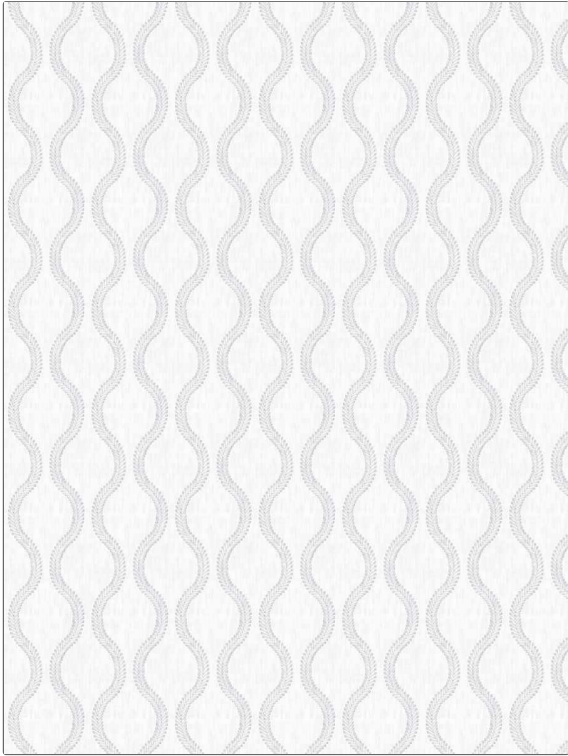


# Fabric Product Details

<b>PATTERN</b>	<b>05461</b>
<b>COLOR</b>	<b>White</b>
<b>BRAND</b>	<b>APPLICATION</b>
<b>Trend</b>	<b>Fabric</b>
<b>USES</b>	<b>CATEGORIES</b>
<b>Bedding, Drapery</b>	<b>Crewels / Embroideries</b>
<b>BOOK</b>	<b>COLORS</b>
<b>Window By Color Vol. II (3 Books) Silver / Haze</b>	<b>Grey, Off White / Ivory</b>
<b>DESIGN TYPES</b>	<b>SCALE</b>
<b>Embroidery, Ogee</b>	<b>Small</b>
<b>RAILROADED</b>	
<b>Not Railroaded</b>	



<b>WIDTH</b>	<b>VERTICAL REPEAT</b>	<b>HORIZONTAL REPEAT</b>	<b>CONTENT</b>
<b>54.00 in (137.16 cm)</b>	<b>4.75 in (12.06 cm)</b>	<b>4.00 in (10.16 cm)</b>	<b>57% Polyester, 43% Cotton</b>
<b>BACKING</b>	<b>DOUBLE RUBS</b>	<b>PRODUCT NUMBER</b>	<b>DATE BOOKED</b>
	<b>Exceeds 51,000 Double Rubs (Wyzenbeek Method)</b>	<b>1931103</b>	<b>06/2024</b>
<b>COUNTRY</b>	<b>CLEANING CODES</b>		
<b>India</b>	<b>S</b>		

**ADDITIONAL PRODUCT NOTES**

**Oeko Tex Standard 100, Ca Tb 117-2013, Embroidered Textiles Are Not, Guaranteed For Precise Color, Matching And Colorfastness., Color Placement Of Embroidery, May Vary. All Measurements, Quoted For Repeats Are, Approximate.**