

# Fabric Product Details

**PATTERN** 05510  
**COLOR** Ecru

**BRAND**

**Trend**

**USES**

**Bedding, Drapery**

**BOOK**

**Window By Color Vol. II (3 Books) Oatmeal / Rose**

**DESIGN TYPES**

**Jacquard Pattern, Leaves, Contemporary / Modern**

**RAILROADED**

**Not Railroaded**

**APPLICATION**

**Fabric**

**CATEGORIES**

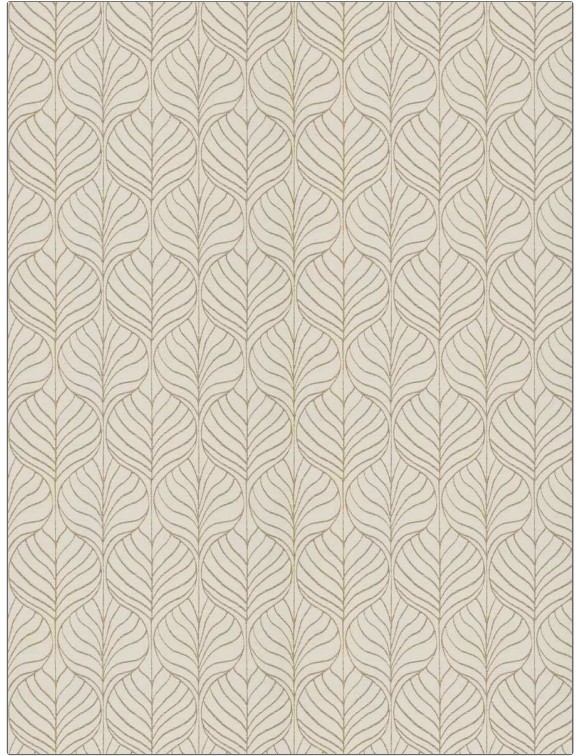
**Wovens**

**COLORS**

**Beige, Off White / Ivory**

**SCALE**

**Medium**



**WIDTH**

**54.00 in (137.16 cm)**

**VERTICAL REPEAT**

**6.69 in (16.99 cm)**

**HORIZONTAL REPEAT**

**13.78 in (35.00 cm)**

**CONTENT**

**76% Polyester, 24% Cotton**

**BACKING**

**FIRE CODES**

**UFAC Class I / NFPA 260**

**PRODUCT NUMBER**

**1939202**

**DATE BOOKED**

**06/2024**

**COUNTRY**

**India**

**CLEANING CODES**

**S**

**ADDITIONAL PRODUCT NOTES**

**Oeko Tex Standard 100, Iso 14001, Ca Tb 117-2013**