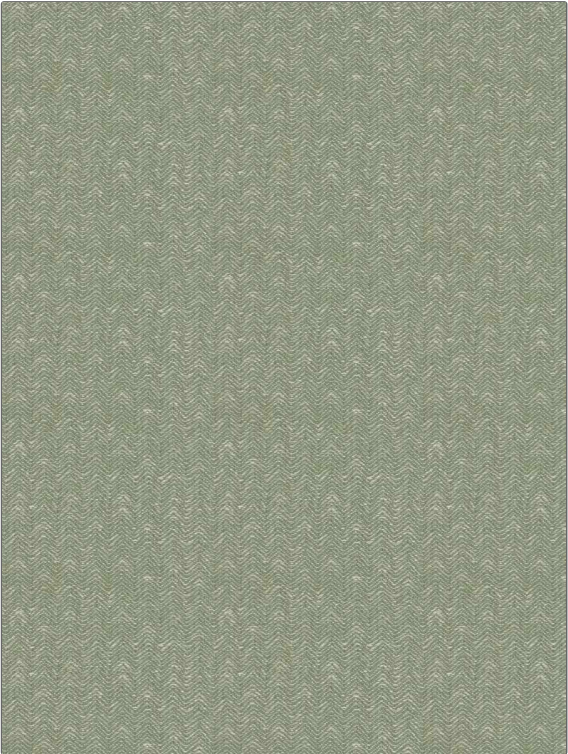


Fabric Product Details

PATTERN 05611
COLOR Matcha

BRAND	APPLICATION
Trend	Fabric
USES	CATEGORIES
Upholstery	Wovens
BOOK	COLORS
Jaclyn Smith Home Vol. VI (3 Books) French Blue / Matcha	Green
DESIGN TYPES	SCALE
Herringbone, Small Scale Woven, Texture Plain	Small
DIRECTION SHOWN	
Up the Bolt	



WIDTH	VERTICAL REPEAT	HORIZONTAL REPEAT	CONTENT
55.00 in (139.70 cm)	2.15 in (5.46 cm)	2.15 in (5.46 cm)	82% Polyester, 18% Linen
BACKING	FIRE CODES	DOUBLE RUBS	PRODUCT NUMBER
100% Acrylic Backing	UFAC Class I / NFPA 260	Exceeds 24,000 Double Rubs (Wyzenbeek Method)	2141501
DATE BOOKED	COUNTRY	CLEANING CODES	
02/2025	China	S	

ADDITIONAL PRODUCT NOTES
 In Compliance With Ca Prop 65, Ca Tb 117-2013, 100% Acrylic Backing, Exclusive Pattern