

## Fabric Product Details

**PATTERN** 05692  
**COLOR** Ribbon

**BRAND**

**Trend**

**USES**

**Drapery**

**COLORS**

**Pink, Red, Off White / Ivory**

**SCALE**

**Large**

**APPLICATION**

**Fabric**

**CATEGORIES**

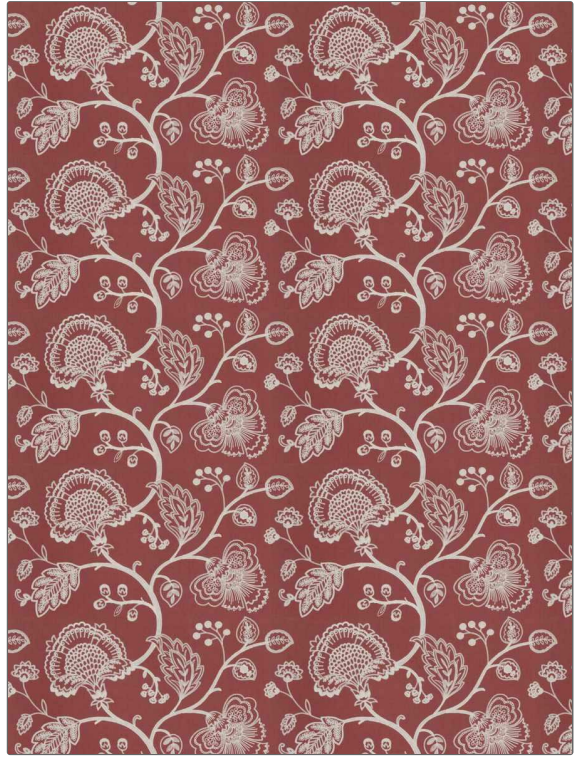
**Crewels / Embroideries**

**DESIGN TYPES**

**Floral, Crewel**

**DIRECTION SHOWN**

**Up the Bolt**



**WIDTH**

**51.00 in (129.54 cm)**

**VERTICAL REPEAT**

**14.75 in (37.46 cm)**

**HORIZONTAL REPEAT**

**25.25 in (64.14 cm)**

**CONTENT**

**Embroidery: 100% Acrylic,  
Base: 55% Linen, 45%  
Cotton**

**BACKING**

**PRODUCT NUMBER**

**2403205**

**COUNTRY**

**India**

**CLEANING CODES**

**S**

**ADDITIONAL PRODUCT NOTES**

**Exclusive Pattern, Embroidered Textiles Are Not, Guaranteed For Precise Color, Matching And Colorfastness., Color Placement Of Embroidery, May Vary. All Measurements, Quoted For Repeats Are, Approximate.**