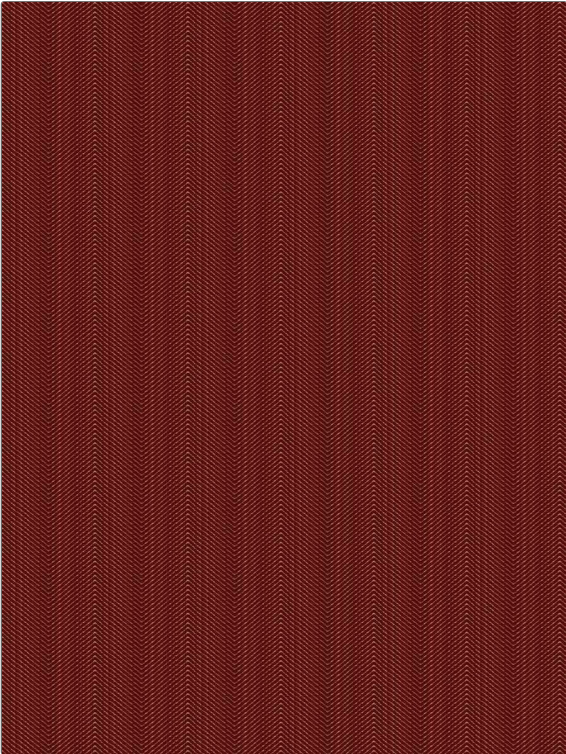


# Fabric Product Details

**PATTERN** 04915  
**COLOR** 02

<b>BRAND</b>	<b>APPLICATION</b>
<b>Trend</b>	<b>Fabric</b>
<b>USES</b>	<b>CATEGORIES</b>
<b>Upholstery</b>	<b>Wovens</b>
<b>COLORS</b>	<b>DESIGN TYPES</b>
<b>Red</b>	<b>Herringbone, Texture Plain, Chevron</b>
<b>SCALE</b>	<b>RAILOADED</b>
<b>Medium</b>	<b>Railroaded</b>



<b>WIDTH</b>	<b>VERTICAL REPEAT</b>	<b>HORIZONTAL REPEAT</b>	<b>CONTENT</b>
<b>54.00 in (137.16 cm)</b>	<b>0.25 in (0.64 cm)</b>	<b>4.45 in (11.30 cm)</b>	<b>100% Polyester</b>
<b>BACKING</b>	<b>FIRE CODES</b>	<b>DOUBLE RUBS</b>	<b>PRODUCT NUMBER</b>
<b>100% Acrylic Backing</b>	<b>UFAC Class I / NFPA 260</b>	<b>Exceeds 15,000 Double Rubs (Wyzenbeek Method)</b>	<b>2878402</b>
<b>COUNTRY</b>	<b>CLEANING CODES</b>		
<b>China</b>	<b>WS</b>		

**ADDITIONAL PRODUCT NOTES**

**Ca Tb 117-2013, 100% Acrylic Backing, Shown Railroaded, Exclusive Pattern**