

## Fabric Product Details

**PATTERN** 04676  
**COLOR** 02

**BRAND**

**Trend**

**APPLICATION**

**Fabric**

**USES**

**Bedding, Drapery**

**CATEGORIES**

**Crewels / Embroideries**

**COLORS**

**Aqua / Teal**

**DESIGN TYPES**

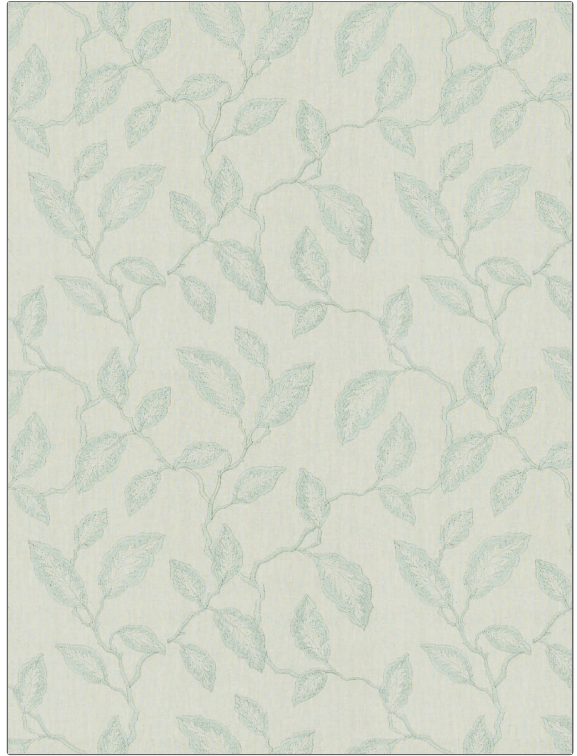
**Embroidery, Leaves**

**SCALE**

**Medium**

**RAILROADED**

**Not Railroaded**



**WIDTH**

**52.00 in (132.08 cm)**

**VERTICAL REPEAT**

**17.50 in (44.45 cm)**

**HORIZONTAL REPEAT**

**17.50 in (44.45 cm)**

**CONTENT**

**Base: 50% Linen, 30% Viscose, 20% Polyester, Embroidery %100 Polyester**

**BACKING**

**PRODUCT NUMBER**

**0444302**

**COUNTRY**

**China**

**CLEANING CODES**

**S**

**ADDITIONAL PRODUCT NOTES**

**Embroidered Textiles Are Not, Guaranteed For Precise Color, Matching And Colorfastness., Color Placement Of Embroidery, May Vary. All Measurements, Quoted For Repeats Are, Approximate.**