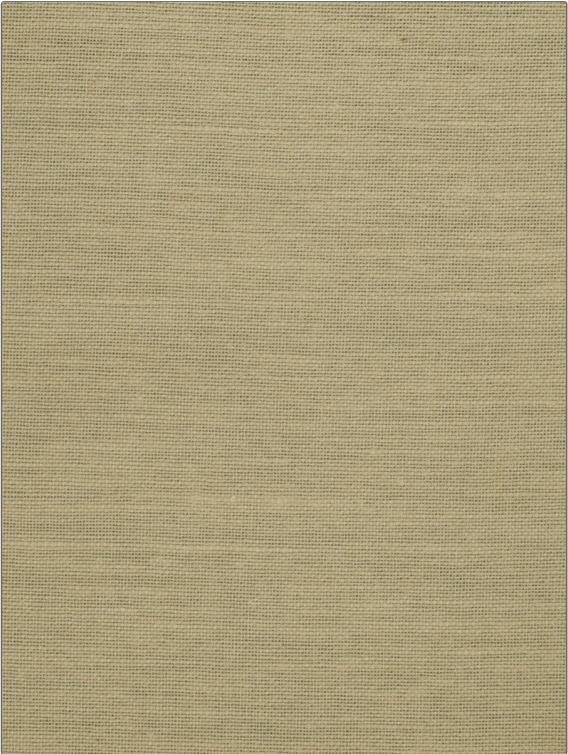


# Fabric Product Details

**PATTERN** 02978  
**COLOR** Raffia

<b>BRAND</b>	<b>APPLICATION</b>
Trend	Fabric
<b>USES</b>	<b>CATEGORIES</b>
Drapery	Sheer, Wovens, Solids / Small Scale Patterns
<b>BOOK</b>	<b>COLORS</b>
Jaelyn Smith Home III Gallery	Beige
<b>DESIGN TYPES</b>	<b>RAILROADED</b>
Texture Plain	Not Railroaded



<b>WIDTH</b>	<b>VERTICAL REPEAT</b>	<b>HORIZONTAL REPEAT</b>	<b>CONTENT</b>
54.00 in (137.16 cm)	0.00 in (0.00 cm)	0.00 in (0.00 cm)	81% Jute, 11% Linen, 8% Cotton
<b>BACKING</b>	<b>FIRE CODES</b>	<b>PRODUCT NUMBER</b>	<b>DATE BOOKED</b>
	UFAC Class I, Passes NFPA 260	4477306	05/2013
<b>COUNTRY</b>	<b>CLEANING CODES</b>		
China	S		

**ADDITIONAL PRODUCT NOTES**

Exclusive Pattern