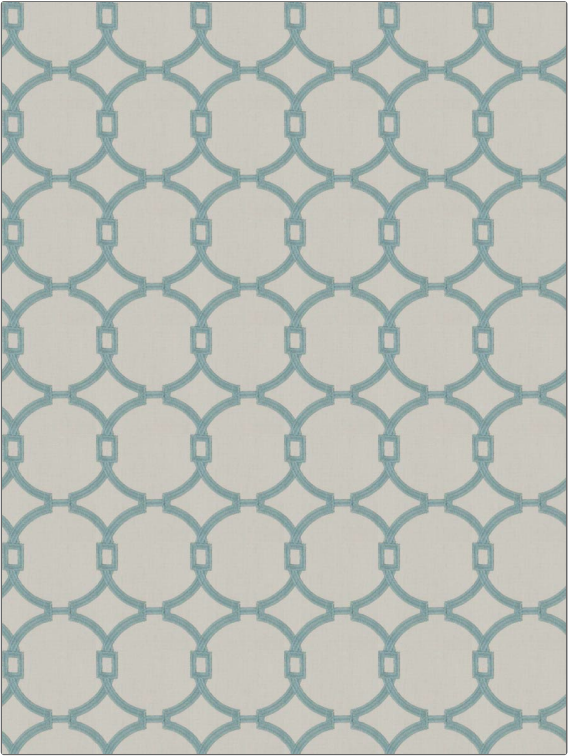


Fabric Product Details

| | |
|--|------------------------|
| PATTERN | 03186 |
| COLOR | Seaglass |
| BRAND | APPLICATION |
| Trend | Fabric |
| USES | CATEGORIES |
| Bedding, Drapery | Crewels / Embroideries |
| BOOK | COLORS |
| Vern Yip Vol. II Aqua / Citrine | Aqua / Teal |
| DESIGN TYPES | SCALE |
| Embroidery, Lattice / Fretwork, Dots / Circles | Medium |
| RAILOADED | |
| Not Railroaded | |



| | | | |
|----------------------|--------------------|--------------------|--|
| WIDTH | VERTICAL REPEAT | HORIZONTAL REPEAT | CONTENT |
| 52.00 in (132.08 cm) | 5.25 in (13.34 cm) | 4.50 in (11.43 cm) | Base: 100% Cotton, Embroidery: 100% Polyester |
| BACKING | PRODUCT NUMBER | DATE BOOKED | COUNTRY |
| | 4668710 | 07/2017 | China |
| CLEANING CODES | | | |
| S | | | |

| |
|---|
| ADDITIONAL PRODUCT NOTES |
| Ca Tb 117-2013, Exclusive Pattern, Embroidered Textiles Are Not, Guaranteed For Precise Color, Matching And Colorfastness., Color Placement Of Embroidery, May Vary. All Measurements, Quoted For Repeats Are, Approximate. |