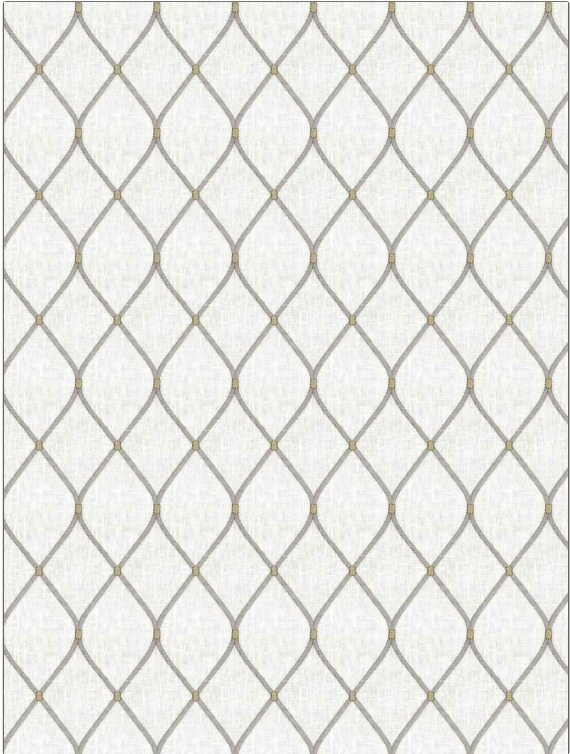


# Fabric Product Details

**PATTERN** 05270  
**COLOR** Fog

|   |                        |
|---|------------------------|
| <b>BRAND</b>                                  | <b>APPLICATION</b>     |
| Trend   | Fabric                 |
| <b>USES</b>                                   | <b>CATEGORIES</b>      |
| Bedding, Drapery                              | Crewels / Embroideries |
| <b>BOOK</b>                                   | <b>COLORS</b>          |
| Chromatics Vol. II (4 Books)<br>Ivory / Birch | Grey, Linen            |
| <b>DESIGN TYPES</b>                           | <b>SCALE</b>           |
| Embroidery, Ogee                              | Medium                 |
| <b>RAILROADED</b>                             |                        |
| Not Railroaded                                |                        |



|                       |                        |                          |   |
|-----------------------|------------------------|--------------------------|---|
| <b>WIDTH</b>          | <b>VERTICAL REPEAT</b> | <b>HORIZONTAL REPEAT</b> | <b>CONTENT</b>  |
| 52.00 in (132.08 cm)  | 6.00 in (15.24 cm)     | 3.75 in (9.52 cm)        | Embroidery: 100% Rayon,<br>Base: 70% Cotton, 25%<br>Polyester, 5% Linen |
| <b>BACKING</b>        | <b>PRODUCT NUMBER</b>  | <b>DATE BOOKED</b>       | <b>COUNTRY</b>  |
|                       | 0501402                | 04/2023                  | India   |
| <b>CLEANING CODES</b> |                        |                          |   |
| S                     |                        |                          |   |

**ADDITIONAL PRODUCT NOTES**

Embroidered Textiles Are Not, Guaranteed For Precise Color, Matching And Colorfastness., Color Placement Of Embroidery, May Vary. All Measurements, Quoted For Repeats Are, Approximate.