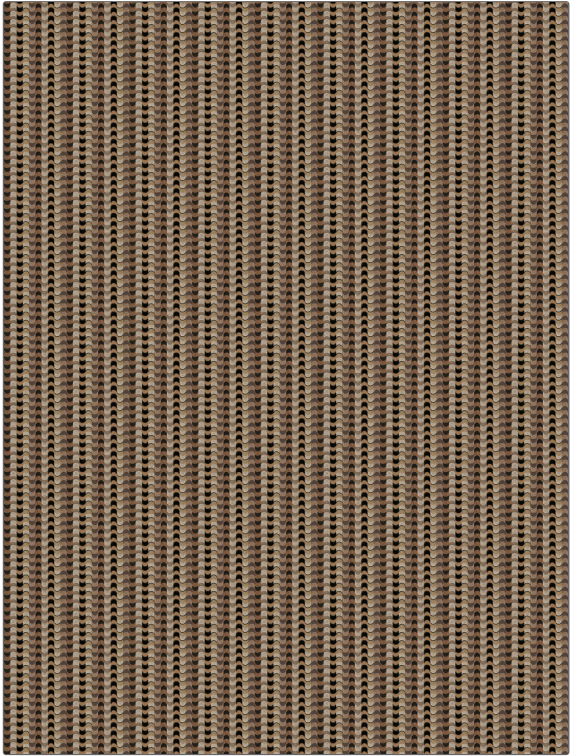


# Fabric Product Details

**PATTERN** 03460  
**COLOR** Sahara

<b>BRAND</b>	<b>APPLICATION</b>
<b>Trend</b>	<b>Fabric</b>
<b>USES</b>	<b>CATEGORIES</b>
<b>Upholstery</b>	<b>Wovens, Chenille</b>
<b>COLORS</b>	<b>DESIGN TYPES</b>
<b>Brown, Beige, Linen</b>	<b>Small Scale Woven, Stripes</b>
<b>SCALE</b>	<b>RAILOADED</b>
<b>Small</b>	<b>Railroaded</b>



<b>WIDTH</b>	<b>VERTICAL REPEAT</b>	<b>HORIZONTAL REPEAT</b>	<b>CONTENT</b>
<b>55.00 in (139.70 cm)</b>	<b>0.00 in (0.00 cm)</b>	<b>3.00 in (7.62 cm)</b>	<b>94% Polyester, 6% Rayon</b>
<b>BACKING</b>	<b>FIRE CODES</b>	<b>DOUBLE RUBS</b>	<b>PRODUCT NUMBER</b>
<b>100% Latex Backing</b>	<b>UFAC Class I / NFPA 260</b>	<b>Exceeds 15,000 Double Rubs (Wyzenbeek Method)</b>	<b>5340801</b>
<b>COUNTRY</b>	<b>CLEANING CODES</b>		
<b>China</b>	<b>S</b>		

**ADDITIONAL PRODUCT NOTES**

**100% Latex Backing, Shown Railroaded, Exclusive Pattern**