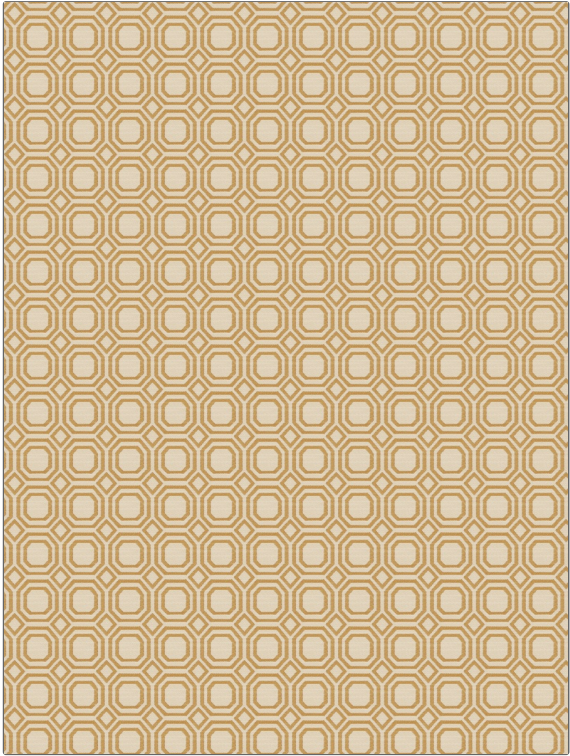


# Fabric Product Details

**PATTERN** 03451  
**COLOR** Straw

|               |  |
|---------------|--|
| <b>BRAND</b>  | <b>APPLICATION</b>                       |
| Trend         | Fabric                                   |
| <b>USES</b>   | <b>CATEGORIES</b>                        |
| Upholstery    | Wovens                                   |
| <b>COLORS</b> | <b>DESIGN TYPES</b>                      |
| Beige, Gold   | Geometric, Lattice / Fretwork, Medallion |
| <b>SCALE</b>  | <b>RAILROADED</b>                        |
| Small         | Not Railroaded                           |



|                      |                         |   |                       |
|----------------------|-------------------------|---|-----------------------|
| <b>WIDTH</b>         | <b>VERTICAL REPEAT</b>  | <b>HORIZONTAL REPEAT</b>                      | <b>CONTENT</b>        |
| 56.00 in (142.24 cm) | 2.25 in (5.72 cm)       | 2.25 in (5.72 cm)                             | 100% Polyester        |
| <b>BACKING</b>       | <b>FIRE CODES</b>       | <b>DOUBLE RUBS</b>                            | <b>PRODUCT NUMBER</b> |
| 100% Latex Backing   | UFAC Class I / NFPA 260 | Exceeds 25,000 Double Rubs (Wyzenbeek Method) | 5351401               |
| <b>COUNTRY</b>       | <b>CLEANING CODES</b>   |   |                       |
| China                | S                       |   |                       |

**ADDITIONAL PRODUCT NOTES**

100% Latex Backing