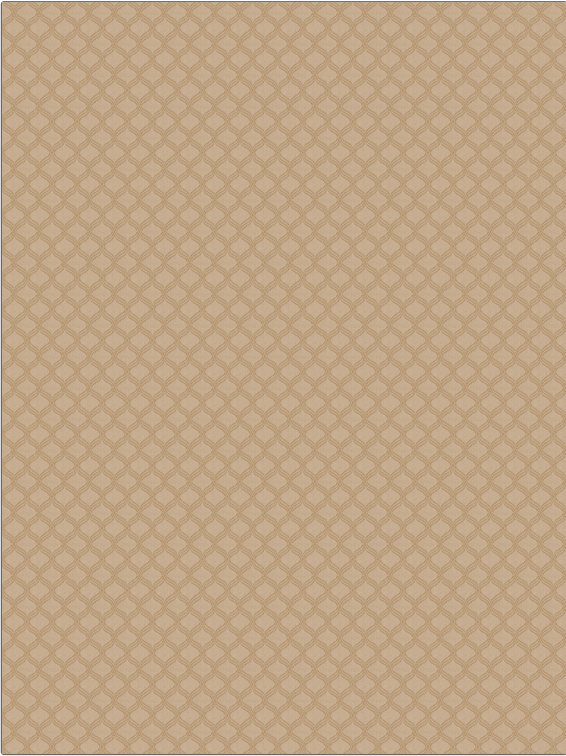


Fabric Product Details

PATTERN 03417
COLOR Sand



| | |
|-------------------|---------------------------------------|
| BRAND | APPLICATION |
| Trend | Fabric |
| USES | CATEGORIES |
| Upholstery | Wovens |
| COLORS | DESIGN TYPES |
| Beige | Small Scale Woven, Solid, Ogee |
| SCALE | RAILROADED |
| Small | Railroaded |

| | | | |
|-----------------------------|--------------------------------|--|-----------------------|
| WIDTH | VERTICAL REPEAT | HORIZONTAL REPEAT | CONTENT |
| 55.00 in (139.70 cm) | 1.25 in (3.18 cm) | 1.25 in (3.18 cm) | 100% Polyester |
| BACKING | FIRE CODES | DOUBLE RUBS | PRODUCT NUMBER |
| | UFAC Class I / NFPA 260 | Exceeds 12,000 Double Rubs (Wyzenbeek Method) | 5354102 |
| COUNTRY | CLEANING CODES | | |
| China | S | | |

ADDITIONAL PRODUCT NOTES

Shown Railroaded