

Fabric Product Details

PATTERN **05051**  
COLOR **Blush**

BRAND

**Trend**

APPLICATION

**Fabric**

USES

**Bedding, Drapery**

CATEGORIES

**Crewels / Embroideries**

BOOK

**Chromatics Blush / Spice**

COLORS

**Pink**

DESIGN TYPES

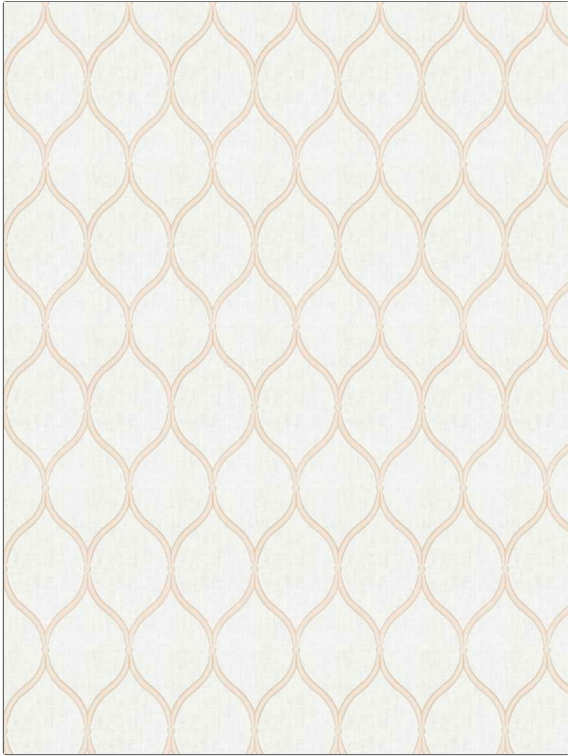
**Embroidery, Ogee**

SCALE

**Medium**

RAILROADED

**Not Railroaded**



WIDTH

**52.00 in (132.08 cm)**

VERTICAL REPEAT

**7.75 in (19.68 cm)**

HORIZONTAL REPEAT

**4.00 in (10.16 cm)**

CONTENT

**Embroidery: 100% Polyester, Base: 70% Cotton, 25% Polyester, 5% Linen**

BACKING

PRODUCT NUMBER

**6067001**

DATE BOOKED

**02/2022**

COUNTRY

**India**

CLEANING CODES

**S**

ADDITIONAL PRODUCT NOTES

**Embroidered Textiles Are Not, Guaranteed For Precise Color, Matching And Colorfastness., Color Placement Of Embroidery, May Vary. All Measurements, Quoted For Repeats Are, Approximate.**