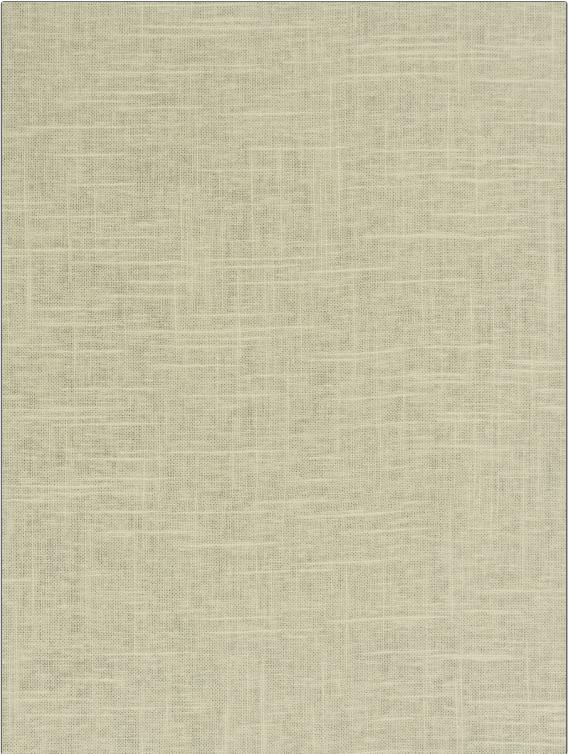


# Fabric Product Details

**PATTERN** 01987  
**COLOR** Ecu



|                       |                               |
|-----------------------|-------------------------------|
| <b>BRAND</b>          | <b>APPLICATION</b>            |
| Trend                 | Fabric                        |
| <b>USES</b>           | <b>CATEGORIES</b>             |
| Drapery, Upholstery   | Solids / Small Scale Patterns |
| <b>BOOK</b>           | <b>COLORS</b>                 |
| Luster Linen Vol. III | Beige, Off White / Ivory      |
| <b>DESIGN TYPES</b>   | <b>RAILROADED</b>             |
| Solid                 | Not Railroaded                |

|                      |                         |   |                       |
|----------------------|-------------------------|---|-----------------------|
| <b>WIDTH</b>         | <b>VERTICAL REPEAT</b>  | <b>HORIZONTAL REPEAT</b>                      | <b>CONTENT</b>        |
| 54.00 in (137.16 cm) | 0.00 in (0.00 cm)       | 0.00 in (0.00 cm)                             | 55% Linen 45% Viscose |
| <b>BACKING</b>       | <b>FIRE CODES</b>       | <b>DOUBLE RUBS</b>                            | <b>PRODUCT NUMBER</b> |
|                      | UFAC Class I / NFPA 260 | Exceeds 12,000 Double Rubs (Wyzenbeek Method) | 7024968               |
| <b>DATE BOOKED</b>   | <b>COUNTRY</b>          | <b>CLEANING CODES</b>                         |                       |
| 01/2020              | China                   | S   |                       |

**ADDITIONAL PRODUCT NOTES**

Ca Tb 117-2013