

## Fabric Product Details

**PATTERN** 02105  
**COLOR** Golden Berry

**BRAND**

**Trend**

**USES**

**Bedding, Drapery**

**COLORS**

**Gold, Green, Red, Burgundy**

**SCALE**

**Medium**

**APPLICATION**

**Fabric**

**CATEGORIES**

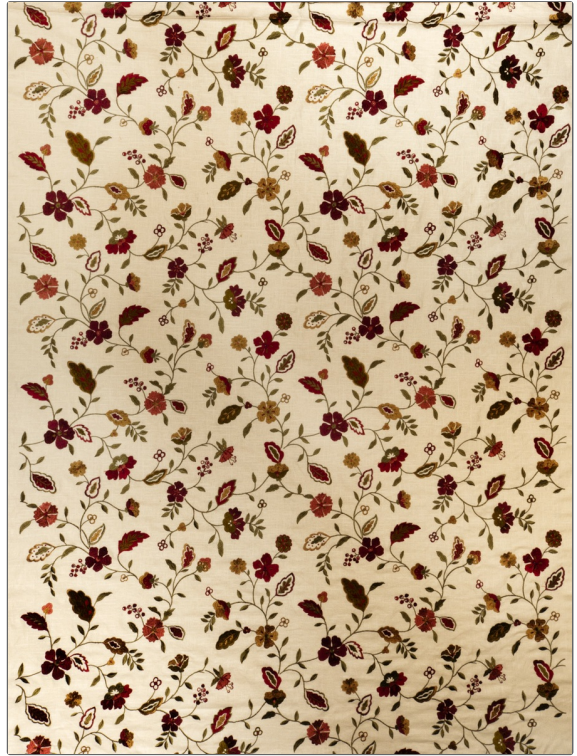
**Crewels / Embroideries**

**DESIGN TYPES**

**Embroidery, Floral**

**RAILROADED**

**Not Railroaded**



**WIDTH**

**55.00 in (139.70 cm)**

**VERTICAL REPEAT**

**21.60 in (54.86 cm)**

**HORIZONTAL REPEAT**

**27.00 in (68.58 cm)**

**CONTENT**

**Base Cloth 55% Linen 45% Cotton, Embroidery 100% Rayon**

**BACKING**

**PRODUCT NUMBER**

**7038002**

**COUNTRY**

**China**

**CLEANING CODES**

**S**

**ADDITIONAL PRODUCT NOTES**

**Exclusive Pattern, Embroidered Textiles Are Not, Guaranteed For Precise Color, Matching And Colorfastness., Color Placement Of Embroidery, May Vary. All Measurements, Quoted For Repeats Are, Approximate.**