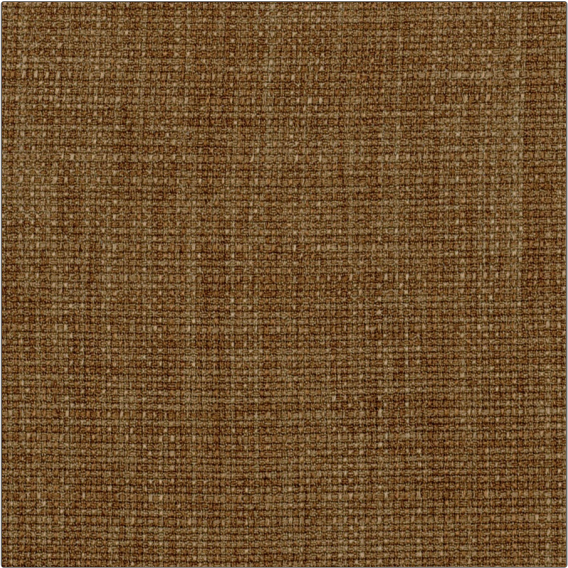


# Fabric Product Details

**PATTERN** 01231  
**COLOR** 15



|                         |   |
|-------------------------|---|
| <b>BRAND</b>            | <b>APPLICATION</b>                      |
| <b>Trend</b>            | <b>Fabric</b>                           |
| <b>USES</b>             | <b>CATEGORIES</b>                       |
| <b>Bedding, Drapery</b> | <b>Solids / Small Scale Patterns</b>    |
| <b>COLORS</b>           | <b>DESIGN TYPES</b>                     |
| <b>Brown</b>            | <b>Small Scale Woven, Texture Plain</b> |
| <b>SCALE</b>            | <b>RAILROADED</b>                       |
| <b>Small</b>            | <b>Not Railroaded</b>                   |

|                             |  |   |                       |
|-----------------------------|--|---|-----------------------|
| <b>WIDTH</b>                | <b>VERTICAL REPEAT</b>                                       | <b>HORIZONTAL REPEAT</b>                              | <b>CONTENT</b>        |
| <b>58.00 in (147.32 cm)</b> | <b>0.00 in (0.00 cm)</b>                                     | <b>0.00 in (0.00 cm)</b>                              | <b>100% Polyester</b> |
| <b>BACKING</b>              | <b>FIRE CODES</b>  | <b>DOUBLE RUBS</b>                                    | <b>PRODUCT NUMBER</b> |
|                             | <b>UFAC Class I, Passes "NFPA 701" 2004, Passes NFPA 260</b> | <b>Exceeds 150,000 Double Rubs (Wyzenbeek Method)</b> | <b>7070515</b>        |
| <b>COUNTRY</b>              | <b>CLEANING CODES</b>  |   |                       |
| <b>Taiwan</b>               | <b>S</b>   |   |                       |

**ADDITIONAL PRODUCT NOTES**

**Exclusive Pattern**