

# Fabric Product Details

**PATTERN** 02115  
**COLOR** Bark

**BRAND**

**Trend**

**APPLICATION**

**Fabric**

**USES**

**Bedding, Drapery,  
Multipurpose**

**CATEGORIES**

**Wovens, Solids / Small  
Scale Patterns**

**COLORS**

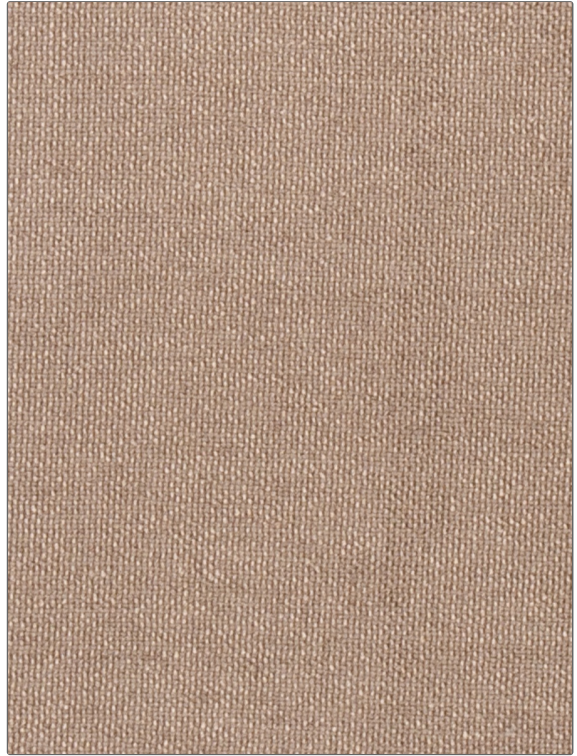
**Taupe / Tan**

**DESIGN TYPES**

**Solid, Texture Plain**

**RAILROADED**

**Not Railroaded**



**WIDTH**

**54.00 in (137.16 cm)**

**VERTICAL REPEAT**

**0.00 in (0.00 cm)**

**HORIZONTAL REPEAT**

**0.00 in (0.00 cm)**

**CONTENT**

**66% Rayon, 34% Polyester**

**BACKING**

**FIRE CODES**

**UFAC Class I, Passes NFPA  
260**

**DOUBLE RUBS**

**Exceeds 50,000 Double  
Rubs (Wyzenbeek Method)**

**PRODUCT NUMBER**

**7177011**

**COUNTRY**

**China**

**CLEANING CODES**

**S**

**ADDITIONAL PRODUCT NOTES**

**Exclusive Pattern**