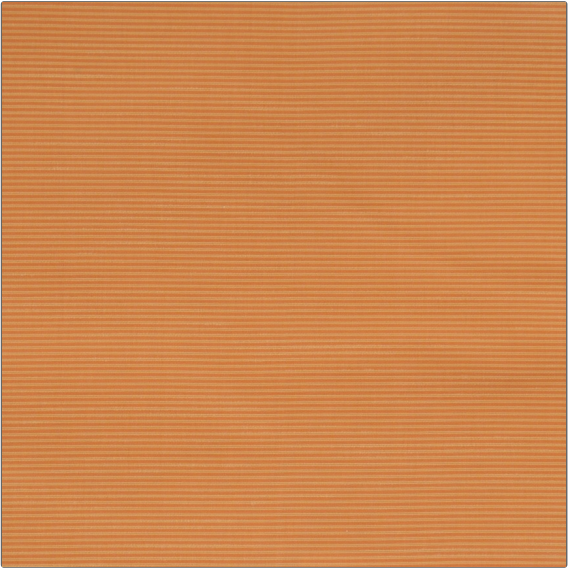


# Fabric Product Details

**PATTERN** 01355  
**COLOR** Cinnamon



<b>BRAND</b>	<b>APPLICATION</b>
Trend	Fabric
<b>USES</b>	<b>CATEGORIES</b>
Drapery	FR-One, NFPA 701 FR, Taffeta, Wovens, Eco / Environment Plus
<b>COLORS</b>	<b>DESIGN TYPES</b>
Orange / Spice	Texture Plain, Contemporary / Modern
<b>RAILROADED</b>	
Not Railroaded	

<b>WIDTH</b>	<b>VERTICAL REPEAT</b>	<b>HORIZONTAL REPEAT</b>	<b>CONTENT</b>
58.00 in (147.32 cm)	0.00 in (0.00 cm)	0.00 in (0.00 cm)	100% Polyester Inherent FR
<b>BACKING</b>	<b>FIRE CODES</b>	<b>DOUBLE RUBS</b>	<b>PRODUCT NUMBER</b>
	Passes ASTM-E84, Passes "NFPA 701" 2004, Passes MVS 302, Boston Fire Test Bfd, Imo Ftpc Part 7 (Drapery)	Exceeds 9,000 Double Rubs (Wyzenbeek Method)	0742816
<b>COUNTRY</b>			
Turkey			

**ADDITIONAL PRODUCT NOTES**  
 Oeko Tex Standard 100, Exclusive Pattern, Passes Ny / Nj Pa, Passes Faa Part 25.853